

www.bcfarmfresh.com

COMPLIMENTARY

FARM FRESH

REFERENCE GUIDE

Fraser Valley Farm Direct Marketing Association

May 2015 - April 2016

LOCAL FARM AREAS

Abbotsford

Agassiz

Chilliwack

Delta

Langley

Mission

Pitt Meadows

Surrey

and places in between...

FRESH BC GROWN FARM PRODUCTS

Best Wishes from the BC Ministry of Agriculture



British Columbians are lucky to live in an area of the world that provides us with so many fresh, healthy, and local food options. I have great respect and admiration for B.C.'s agriculture community and the food security they provide us.

The Fraser Valley Farm Fresh Guide is the go-to publication that will direct you to your local food producers and farmers. These hard working people are your neighbours – and an integral part of the more than 60,000 British Columbians working in our agrifoods sector.

The B.C. Government is supporting the sector through initiatives such as the Buy Local Program where we have invested \$6 million in funding since 2012. When you visit a Fraser Valley farm this season, you are also making an important contribution in supporting locally grown and produced food. This commitment supports families, communities and British Columbia.

The Fraser Valley Farm Fresh Guide is put together by the Fraser Valley Direct Marketing Association. I congratulate them on their leadership and for being a strong voice for the Fraser Valley farming community.

Enjoy!

Hon. Norm Letnick
Minister of Agriculture

Alphabetical Index of Farms

Aldor Acres.....	59	Glorious Organics Co-operative.....	44	Pine Meadows Tree Farms Ltd.....	7
Anita's Organic Grain and Flour Mill Ltd.....	12	Goat's Pride Dairy at McLennan Creek.....	30	Port Kells Nurseries.....	70
Annie's Orchard.....	46	Golden Ears Cheesecrafters Ltd.....	65	Ralph's Farm Market.....	52
Applebarn Pumpkin Farm Ltd.....	24	Goldwing Free Range Meats.....	49	Rockweld Farm.....	32
Arjuna Berry Farm.....	25	Grow & Gather.....	64	Rondriso Farms.....	71
Art's Nursery Garden Centre.....	69	Honeybee Centre.....	73	Select Roses.....	51
Birchwood Dairy.....	17	Honeyview Farm Ltd.....	3	Silverhill Apple Orchard.....	38
Bissett Farms Ltd. and Westham Island Estate Winery.....	84	Hopcott Premium Meats.....	66	Sparkes Corn Barn.....	1
Bloomers.....	62	Howard Wong Farms.....	35	Sumas Mountain Farms.....	28
Blueberry Junction.....	42	J D Farms Specialty Turkey Store.....	47	Sumas River Farm.....	85
Bumbleberry Farms.....	26	KBF Nursery and Farm Market.....	16	Surrey Farms.....	74
Campbell's Gold Honey Farm and Meadery.....	40	K & M Farms.....	39	The Country Key.....	18
Cedar Rim Nursery.....	58	Kensington Prairie Farm.....	45	The Farm House Natural Cheeses Ltd.....	2
Cherry Jubilee.....	41	Krause Berry Farms.....	48	The Farm Store at Fraser Valley Speciality Poultry.....	10
Chilliwack Original Corn Maze.....	13	Lepp Farm Market.....	31	The Local Harvest Market.....	11
Clayburn Berry Village.....	29	Little Mountain Greenhouses.....	6	The Veggie Patch.....	54
Clearview Garden Shop.....	53	M & M Pacific Coast Farm.....	75	Trout Creek Farm.....	37
Cloverdale Country Farms.....	76	Maan Farms.....	22	Two EE's Farm Market.....	72
Croft Produce.....	61	Mary's Garden.....	77	U-Grow Organic Community Gardens.....	60
Crophorne Farm.....	83	Matsqui Blue Farms.....	33	Urban Digs Farm.....	79
Dave's Orchard.....	55	Meadows Maze/Cranberry Meadows Country Market.....	67	Warkentin Organic Farm.....	36
Driediger Farms Ltd.....	56	Milner Valley Cheese.....	57	Wenro Farms.....	8
Earthwise Farm and Garden.....	80	MSB Farm.....	34	Westham Island Herb Farm.....	81
EcoDairy in Partnership with Science World.....	21	Murphy's Christmas Tree Farm.....	63	Willow View Farms.....	23
Emma Lea Farms Ltd.....	82	Nature's Pickin's Market.....	20	Wisbey Veggies.....	15
Fantasy Farms Inc.....	5	Neufeld Farms.....	27	Yarrow Elderberry Farm.....	9
Flowers From A Country Garden.....	50	Olera Organic Farm.....	43	Yellow Barn Country Produce.....	14
Forstbauer Natural Food Farm.....	4	Painted River Farm.....	68	Zaklan Heritage Farm.....	78
Gelderman Farms Ltd.....	19				

*The numbers cited next to each farm correspond to the order of the farms listed in the guide, **NOT** the page number!

A Message From The President of the FVFDMA



Welcome to the 2015 – 2016 edition of the Farm Fresh Reference Guide – the 20th year of operation. Our farmers sell what they produce either directly from their farms or at area farmers' markets. Take a few minutes to familiarize yourself with the Guide and our website at bcfarmfresh.com. Please continue to support your local farmers, the people who bring you fresh, wholesome, quality farm products for your families.

The Farm Fresh Reference Guide and our website at bcfarmfresh.com have been very important contributors to consumer acceptance of local farm fresh products. Consumers continue to contact us to find area farms where they can get the fresh, nutritious local food that they are looking for. Take a look at our product index. You will find a wide range of local food and other agricultural products available. I urge you to be open to trying new products and visiting all of the farms in our Guide this year.

On behalf of our farmers, I extend a special thank you to our many customers and the advertisers who support our farmers. The Guide is available at all our listed farms, but it is also distributed by various businesses such as Otter Coop, Minter Country Garden and the Vancouver Public library. Also, the Fraser Valley Library system helps us to distribute Guides through their member libraries as do many other public facilities such as Tourist Bureau. Most farmers' markets in the area will have farm fresh guides available and we are present at most major agricultural events in this area.

Murray Siemens, President, FVFDMA

New Farm Members This Year The FVFDMA welcomes 9 new farm members this year.

Croft Produce (#61) – a wonderful selection of vegetables and flowers grown using natural farming practices.

Earthwise Farm and Garden (#80) – an ecological demonstration garden and organic teaching farm that grows a large variety of organic vegetables and fruit. And an organic farmers market on Saturdays.

EcoDairy in Partnership with Science World (#21) – a one-of-a-kind demonstration dairy farm. Located next to Nature's Pickin's Market.

Murphy's Christmas Tree Farm (#63) – located in Maple Ridge; they grow and sell a wide variety of Christmas trees

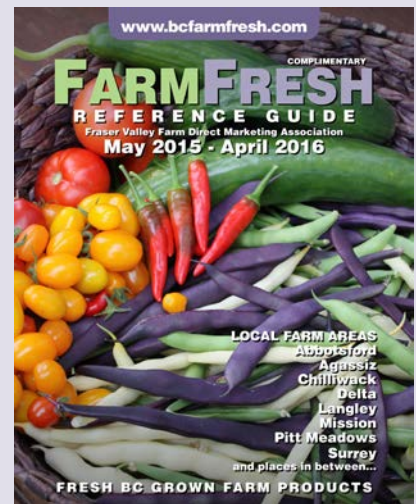
Nature's Pickin's Market (#20) – a country store with a wide range of fresh fruit and vegetables and specialty products. Located next to EcoDairy.

Olera Organic Farm (#43) – organic raspberries and a wide variety of organic vegetables

The Country Key (#18) – specializing in Elegant eggplants – the long, purple varieties

Urban Digs Farm (#79) – located in south Burnaby; they raise pastured meat, eggs; and grow fresh vegetables and flowers.

Zaklan Heritage Farm (#78) – located in Central Surrey, they grow 40 different types of vegetables using sustainable, ecological practices. They sell eggs from pasture raised laying hens.



Cover photo courtesy of Renata Triveri from Grow & Gather (Trice Farms Ltd.)

The Farm Fresh Reference Guide is produced by the Fraser Valley Farm Direct Marketing Association in cooperation with the BC Ministry of Agriculture.

For information on participating in the 2016– 2017 Farm Fresh Reference Guide, contact us at:

FVFDMA 35390 McCorkell Drive
Abbotsford, BC V3G 2C3
Tel: 604.866.7600
Email: directors@bcfarmfresh.com

The following are the FVFDMA Board of Directors 2015 – 2016

Murray Siemens, President
Tel: 604.854.8710

Raymond Barker, Director
Tel: 604.820.7957

Sonja Barker, Director
Tel: 604.820.7957

Diane Bruinsma, Director
Tel: 604.819.6203

Judy Campbell, Director
Tel: 604.856.2125

Mary Forstbauer, Director
Tel: 604.794.3999

Jim Rahe, Director
Tel: 604.856.3041

Jill Robbins, Director
Tel: 604.857.8912

Catherine Simpson, Director
Tel: 604.626.4395

Loren Taves, Director
Tel: 604.853.3108

Stafford Richter, Director
Tel: 604.356.4195

Sarah Van Heeswijk, Advisor
BC Ministry of Agriculture Tel: 604.556.3051

Products Index 2015 to 2016 Farm Fresh

Products Grown or Produced in The Lower Mainland

- Alpacas/Alpaca Products**...11, 45
Apples...11, 16, 22, 23, 24, 31, 35, 38, 43, 44, 46, 48, 52, 55, 63, 77, 80
Apricots...11, 22, 31, 35, 52, 77
Artichokes...11, 35, 48, 52, 70, 81
Asian Vegetables...11, 15, 31, 35, 43, 44, 48, 54, 61, 70, 72, 78, 79, 80, 83
Asparagus...80
Beans...4, 8, 11, 14, 15, 16, 20, 22, 31, 35, 38, 43, 44, 48, 52, 54, 55, 61, 62, 70, 71, 72, 74, 77, 78, 79, 80, 81, 82, 83
Bedding Plants...6, 16, 44, 52, 53, 58, 61, 62, 64, 69, 70, 76, 81
Beef...4, 10, 14, 28, 31, 32, 35, 45, 49, 66, 67, 68, 71, 82
Bees / Beeswax / Other Bee Products...3, 8, 16, 35, 40, 73, 78
Beets...4, 8, 11, 14, 15, 22, 31, 35, 38, 44, 52, 54, 55, 61, 62, 70, 71, 72, 77, 78, 79, 80, 81, 83
Blackberries...4, 11, 16, 20, 22, 23, 25, 26, 31, 35, 36, 48, 52, 56, 61, 66, 70, 74, 82, 84
Blueberries...4, 11, 16, 19, 20, 22, 23, 25, 26, 29, 31, 33, 34, 35, 36, 42, 48, 52, 56, 70, 74, 75, 77, 81, 82, 84, 85
Boysenberries...35, 70, 84
Bread...10, 11, 12, 14, 31, 35, 48, 52, 72, 74, 77
Broccoli...4, 11, 15, 16, 22, 31, 35, 43, 44, 52, 55, 59, 61, 62, 70, 71, 77, 78, 80, 83
Brussels Sprouts...4, 11, 14, 15, 16, 31, 35, 52, 54, 61, 62, 70, 77, 78, 79, 83
Butter...2, 31, 35, 48, 52, 56, 65
Cabbage...4, 11, 15, 16, 22, 31, 35, 43, 44, 52, 54, 55, 61, 62, 70, 71, 72, 76, 78, 79, 80, 82, 83
Cauliflower...4, 11, 14, 15, 16, 31, 35, 52, 55, 59, 61, 62, 70, 71, 77, 80
Carrots...4, 8, 11, 14, 15, 16, 22, 31, 35, 44, 52, 54, 55, 61, 62, 71, 72, 76, 77, 78, 79, 80, 81, 83
Cedar Hedging...8, 16, 25, 55, 58, 64, 69, 70
Celery...11, 31, 35, 43, 52, 70, 72, 79
Celeriac...11, 14, 15, 35, 44, 70, 77, 81, 83
Cheese...2, 8, 10, 11, 14, 17, 30, 31, 35, 48, 52, 56, 57, 65
Cherries...11, 16, 22, 25, 31, 35, 38, 41, 48, 52, 77, 80
Chicken...10, 27, 28, 31, 32, 35, 39, 49, 66, 79
Christmas Trees...6, 7, 31, 48, 55, 63, 69, 70
Cider / Juice...11, 23, 24, 31, 35, 48, 52
Clematis...53, 58, 64, 69, 70
Compost...19, 64, 69, 70
Corn, Sweet...1, 5, 11, 14, 15, 16, 22, 23, 25, 27, 31, 35, 38, 48, 52, 55, 59, 62, 66, 67, 70, 71, 72, 74, 76, 77, 80, 81
Corn, Ornamental...5, 6, 11, 14, 15, 16, 20, 22, 23, 24, 35, 52, 59, 70, 77, 81
Cranberries...11, 31, 35, 52, 66, 67, 70
Cucumbers, Field...4, 11, 14, 15, 16, 22, 27, 31, 35, 43, 44, 52, 55, 61, 70, 74, 77, 78, 80, 81, 83
Cucumbers, Hothouse...8, 22, 31, 35, 43, 52, 62, 78, 83
Cucumbers, Pickling...4, 11, 14, 15, 22, 27, 31, 35, 43, 44, 48, 52, 54, 62, 70, 71, 74, 78, 79, 80, 83
Currants...27, 35, 36, 56, 70, 79, 80, 84
Cyclamen...6, 58, 69, 70
Dahlia Tubers...6, 20, 58, 64, 69, 70
Dairy Products...2, 10, 11, 17, 30, 31, 35, 48, 52, 65, 72, 77
Ducks...10, 11, 49, 79
Ducks Eggs...10, 55
Eggplant...4, 11, 15, 18, 24, 31, 35, 52, 70, 77, 80, 83
Eggs...4, 8, 10, 11, 14, 20, 22, 28, 30, 31, 32, 35, 48, 52, 59, 61, 62, 65, 70, 77, 78, 79, 83
Elderberries, Elderflowers...9, 70
Flour / Other Grain Products...10, 11, 12, 31, 35, 52, 61
Flowers, Annuals...6, 15, 52, 53, 58, 62, 64, 70, 72, 78, 81
Flowers, Bulbs...6, 58, 64, 70
Flowers, Dried...15, 78, 84
Flowers, Fresh cut...6, 15, 40, 48, 50, 55, 61, 62, 69, 72, 77, 78, 79, 80, 81
Flowers, Perennials...6, 52, 53, 58, 61, 62, 64, 70, 72, 76, 78, 81
Fruit Pies...8, 14, 22, 24, 29, 31, 32, 38, 48, 56
Fruit Trees...6, 11, 16, 46, 58, 64, 69, 70
Garlic...4, 5, 8, 11, 15, 16, 31, 35, 38, 44, 52, 54, 61, 62, 70, 77, 78, 79, 80, 81, 83
Geese...10
Goats and Goat Milk...2, 30, 31, 52, 68, 70, 79
Gooseberries...24, 31, 35, 70, 79, 84
Gourds...4, 5, 8, 11, 13, 14, 15, 20, 22, 23, 24, 31, 40, 48, 52, 55, 70, 71, 80, 81, 83
Grapes...11, 16, 20, 31, 35, 52, 70, 77, 84
Grasses...6, 62, 64, 70
Hanging Baskets...6, 8, 15, 16, 52, 53, 58, 62, 64, 69, 70, 81, 82
Hay...4, 70, 71, 82
Hazelnuts...11, 14, 31, 70, 78
Herbs / Herb Products...6, 8, 11, 15, 20, 31, 35, 44, 48, 52, 53, 54, 61, 62, 64, 70, 72, 77, 78, 79, 80, 83
Holly...4, 6, 48, 55, 64, 69, 70
Honey...2, 3, 4, 10, 11, 14, 16, 22, 24, 29, 30, 31, 34, 35, 40, 45, 48, 52, 56, 65, 70, 72, 73, 74, 75, 77, 78, 80, 81, 82
Horses...48
Ice Cream, Gelato...2, 8, 10, 11, 14, 16, 17, 20, 22, 27, 31, 34, 38, 48, 52, 57, 76, 82
Irises...6, 58, 70
Jams / Preserves / Spreads...2, 8, 11, 24, 29, 31, 35, 38, 40, 45, 48, 52, 56, 59, 65, 74, 75, 77, 79, 81, 82, 84
Japanese Maples...6, 7, 16, 58, 69, 70
Jostaberries...79
Kale...4, 11, 14, 15, 31, 35, 43, 44, 52, 54, 61, 62, 70, 72, 77, 78, 79, 80, 83
Kohlrabi...4, 11, 14, 15, 31, 35, 52, 70, 72, 78, 80, 83
Lamb...10, 57
Lavender...6, 15, 48, 58, 64, 69, 70, 79
Leeks...4, 8, 11, 14, 15, 31, 35, 43, 44, 52, 70, 72, 77, 78, 80, 83
Lettuce, Field...4, 11, 14, 15, 35, 38, 48, 52, 54, 61, 62, 72, 77, 78, 80, 83
Loganberries...70, 84
Mead...40
Melons...11, 15, 31, 35, 52, 62, 70, 78
Milk / Milk Products...10, 11, 17, 20, 31, 35, 52, 65, 70
Nursery Stock...6, 7, 16, 25, 53, 58, 62, 64, 69, 70, 76
Onions...8, 11, 14, 15, 22, 31, 35, 43, 48, 52, 54, 61, 62, 70, 71, 72, 76, 77, 78, 80, 83
Ostrich / Ostrich Products...49
Pancake Mix...12, 31, 48, 52
Parsnips...4, 11, 14, 15, 31, 35, 52, 70, 71, 76, 77, 78, 83
Peaches...11, 25, 31, 35, 38, 48, 52, 77
Pears...11, 16, 22, 23, 31, 35, 38, 43, 46, 48, 52, 55, 70, 77, 80
Peas...4, 11, 15, 22, 31, 35, 38, 43, 48, 52, 54, 62, 70, 71, 78, 79, 80, 82
Peppers, Field...11, 14, 15, 16, 22, 25, 35, 43, 52, 54, 61, 62, 70, 77, 78
Peppers, Hothouse...8, 11, 15, 22, 24, 25, 31, 35, 48, 52, 61, 62
Plums...4, 11, 16, 22, 23, 24, 31, 35, 38, 44, 48, 52, 70, 77, 78, 80
Poinsettias...6, 31, 48, 69, 70
Pork...10, 19, 28, 31, 35, 49, 59, 66, 79
Potatoes...4, 11, 14, 15, 16, 20, 22, 23, 24, 31, 35, 38, 44, 48, 52, 54, 55, 61, 67, 70, 71, 72, 74, 76, 77, 78, 79, 80, 82, 83
Potting Soil...6, 58, 64, 69, 70, 81
Pumpkins...4, 5, 8, 11, 13, 14, 15, 16, 20, 22, 23, 24, 27, 31, 35, 40, 48, 52, 54, 55, 59, 67, 70, 71, 72, 76, 79, 80, 81, 83
Radicchio...11, 15, 31, 35, 43, 52, 70, 78, 80
Radishes...4, 11, 14, 15, 16, 31, 35, 43, 52, 54, 62, 70, 71, 72, 77, 78, 79, 80, 83
Raspberries...11, 16, 22, 23, 25, 26, 27, 31, 35, 43, 48, 52, 56, 66, 70, 74, 80, 82, 84
Rhododendrons...6, 16, 58, 64, 69, 70
Rhubarb...11, 14, 15, 16, 20, 22, 23, 31, 33, 35, 44, 52, 56, 60, 61, 62, 70, 77, 78, 80, 84
Roses...51, 64, 69, 70
Salad Greens...4, 11, 15, 31, 35, 38, 43, 44, 52, 54, 61, 78, 79, 80, 83
Saskatoon Berries...23, 70
Shallots...11, 15, 31, 35, 52, 61, 70, 81, 83
Spinach...4, 11, 14, 15, 31, 35, 38, 43, 52, 54, 61, 62, 70, 77, 78, 79, 80, 83
Sprouts...31, 35, 52, 61, 72, 78
Squash...4, 5, 8, 11, 14, 15, 20, 22, 23, 24, 31, 35, 38, 43, 44, 48, 52, 55, 61, 62, 70, 71, 72, 76, 77, 78, 79, 80, 83
Strawberries...8, 11, 22, 25, 26, 27, 31, 35, 36, 38, 48, 52, 56, 61, 62, 66, 70, 74, 81, 82, 84
Strawberries, Everbearing...8, 38, 48, 70
Swiss Chard...4, 11, 15, 31, 35, 38, 43, 44, 52, 54, 61, 62, 70, 72, 77, 78, 79, 80, 83
Tayberries...66, 70, 82, 84
Tomatoes, Field...11, 15, 31, 35, 38, 43, 44, 48, 52, 54, 61, 62, 70, 77, 78, 79, 83
Tomatoes, Hothouse...8, 15, 24, 52, 61, 62, 78, 80
Trees / Shrubs...6, 25, 58, 64, 69, 70
Trout...37
Tulips...6, 70
Turkey...31, 39, 47, 49
Turnip / Rutabaga...11, 14, 15, 16, 31, 35, 52, 54, 61, 78, 82, 83
Vinegars / Sauces / Oils...14, 31, 48, 52, 65, 77
Walnuts...31, 52, 70
Water, Artesian...6, 60
Water Plants...6, 58, 69, 70
Wine...22, 40, 48, 84
Yogurt...2, 17, 30, 31, 35, 52
Zucchini...4, 8, 11, 14, 15, 16, 20, 22, 31, 35, 43, 48, 52, 54, 55, 61, 62, 70, 71, 78, 80, 83

Feature Index

Bakery / Baked Goods / Dry mixes...10, 11, 12, 14, 17, 20, 22, 31, 38, 48, 52, 56, 63, 65, 76, 82
Blacksmith...44
BCSPCA Certified...28, 32, 68, 71
CSA Program...44, 80, 81, 83
Corn Maze...13, 22, 24, 67
Country Store...2, 3, 6, 8, 10, 11, 14, 15, 16, 17, 20, 22, 23, 24, 27, 30, 35, 38, 40, 45, 47, 48, 57, 61, 65, 67, 72, 73, 74, 76, 77, 79, 80, 81
Crafts...11, 20, 24, 38, 44, 49, 59, 67, 73, 84
Deli...17, 31, 20, 52, 66, 76
Farm Animal Display...5, 11, 13, 17, 20, 21, 22, 23, 24, 30, 48, 57, 59, 67, 70, 71, 73, 79
Farm Tours / Demonstrations...6, 7, 8, 11, 17, 20, 21, 22, 24, 30, 34, 40, 44, 45, 48, 55, 57, 59, 60, 70, 71, 73, 74, 78, 79, 80, 81, 84
Frozen Foods...11, 14, 17, 19, 20, 22, 24, 27, 31, 33, 36, 38, 39, 41, 42, 43, 47, 48, 52, 71, 76, 79
Full Variety of Fruits / Vegetables...4, 11, 14, 15, 16, 17, 20, 22, 27, 31, 35, 38, 43, 44, 48, 52, 56, 71, 72, 74, 76, 77, 78, 79, 81, 82
Gardens/Nursery...6, 11, 15, 17, 44, 48, 50, 51, 53, 58, 60, 62, 64, 69, 70, 76, 79, 80, 81
Gluten-free...17, 20, 31, 32, 65, 66, 76, 84
Hayrides...5, 11, 22, 23, 24, 48, 59, 67, 70, 71
Health Products / Remedies / Tinctures...3, 38
Heritage Farm...57, 60, 70

Make It A Destination

Kosher / Halal...12, 47
Meadery...40
Meat Shop...10, 20, 27, 31, 47, 66, 71, 79
Organic...24, 10, 12, 28, 29, 33, 36, 43, 44, 60, 72, 80, 83, 85
Picnic Area...5, 11, 13, 14, 17, 20, 21, 24, 37, 56, 59, 60, 65, 67, 70, 78, 79, 80, 82, 84
Playground/Swing...5, 11, 17, 24, 37, 48, 59, 67, 70, 76, 79, 82
Restaurant / Coffee Shop / Concession / Tea-house...5, 11, 14, 17, 31, 47, 48, 65, 67, 70, 73, 76
Seasonal / Special Events...2, 5, 6, 11, 13, 20, 22, 23, 24, 30, 31, 38, 40, 48, 52, 56, 59, 61, 63, 64, 65, 67, 70, 71, 73, 74, 78, 79, 80, 82
Soaps / Cosmetics...3, 30, 38, 48, 52, 49, 57, 73, 81
Unusual/Native/Special Plants...6, 58, 70, 80
U-grow...60
U-pick / U-catch / U-cut...4, 5, 7, 9, 11, 13, 20, 22, 23, 24, 25, 26, 33, 37, 42, 48, 54, 56, 59, 62, 63, 70, 71, 74, 78, 81, 82, 84
Wheelchair Accessible...37, 38, 48, 70
Winery...22, 48, 84
Workshops / Courses / Lessons...6, 11, 31, 37, 40, 48, 58, 59, 65, 70, 73, 78, 79

Welcome to the Fraser Valley Farm Direct Marketing Association Guide



BUY LOCAL

EAT FRESH

PORT COQUITLAM FARMERS MARKET

**THURSDAYS
3 - 7 P.M.**

JUNE TO SEPTEMBER

2253 Leigh Square next to City Hall
 in Downtown Port Coquitlam
 hfminfo@haneyfarmersmarket.org
 www.portcoquitlamfarmersmarket.org

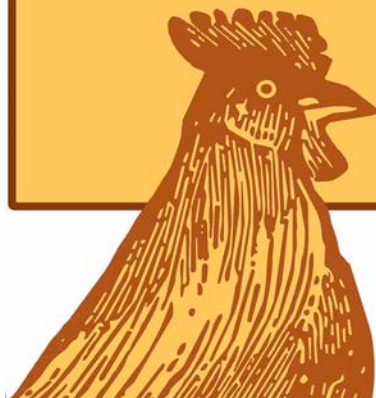


HANEY FARMERS MARKET

**SATURDAYS
9 A.M. - 2 P.M.**

MAY TO NOVEMBER

Memorial Peace Park on 224th St.
 in Downtown Maple Ridge
 hfminfo@haneyfarmersmarket.org
 www.haneyfarmersmarket.org



How to use this guide:

Refer to the products index on page 4 for a listing of farms that supply the BC-grown products you are looking for. The numbers cited next to each product correspond to the order of the farms listed in the guide, **NOT** the page number!

Use the map provided on pages 12 & 13 to locate the growers that interest you.

For your convenience, farms in this guide are listed East to West and are listed alphabetically in the alphabetical index of farms.

Farm Listings 2015 - 2016 Farm Fresh

1 Sparkes Corn Barn

Ian and Maria Sparkes

Tel: 604.794.0198 • Fax: 604.794.0178

Email: sparkescornbarn@gmail.com

Website: www.chilliwackcorn.com

Like us on Facebook and follow us on Twitter! Sparkes sweet corn is locally grown in Chilliwack, BC and is picked fresh and delivered directly from our fields to our convenient drive-thru stands daily, ensuring it comes to you ripe, fresh, and full of flavor – we guarantee it! Winner of the 2013 agriculture business excellence award in Chilliwack. MANY LOCATIONS — At the **Agassiz** turnoff on Hwy #9; in **Popkum** next to Ranchers Restaurant; in **Chilliwack** on Luckakuck Way just east of Superstore, Luckakuck Way next to Husky gas station, Yale Road in front of Little Mountain greenhouse, on the corner of Evans road & Sumas Central, and in the parking lot next to Ken's Tire and Wheel on Alexander Avenue, on Lickman Road by Tim Hortons; in **Vedder** at the corner of Promontory Road and Chilliwack River Road; in **Abbotsford** at Shell Station on the north corner of Watcom and North Parallel Road, and at the Visitor Information Centre parking lot on Sumas Way north of Highway #1. Check our website for more locations near you throughout the summer. Just look for the green and yellow hip roof drive thru barns throughout the upper Fraser Valley, Kelowna, and Vernon or call 604.794.0198 to place wholesale or freezer orders. **Open: mid-July-Oct, daily (depending on crop), 10am-6pm. See our website for up-to-date information on open locations, hours, and available varieties.**

2 The Farm House Natural Cheeses Ltd.

Debra Amrein-Boyes

5634 McCallum Road, Agassiz

Tel: 604.796.8741 • Fax: 604.796.8741

Email: info@farmhousecheeses.com

Website: www.farmhousecheeses.com

Farm House Natural Cheeses are made right on our family dairy farm from the rich fresh milk of our own cows and goats. Experience the wonderful taste of true hand-made cheeses, including our award winning Cheddar (Canadian Champion Aged Cheddar 2014!), fresh cheese curds, Gouda, brie, camembert, our famous Castle Blue, and several varieties of soft and hard goat cheeses. We also sell cultured butter, crème fraîche, Greek-style yogurt and drinkable yogurt, and fresh bottled cow and goat milk, all made right here on the farm. Stock up on farm-raised meats too and browse the great selection

Continued...

of specialty food items in the farm store. Take a stroll around the farm to meet the animals where they live and work. Enjoy a great day out on the Agassiz Farms Cycle Tour July 25th, and join us for Brunch on the Farm August 3rd. Check our website for details at www.farmhousecheeses.com. **Open: Year round, daily 10am-5pm. Closed Easter Sunday, December 25, 26, and the first 2 weeks of January.**

3 Honeyview Farm Ltd.

Jerry and Pia Awram and Family
10609 McGrath Road, Rosedale

Tel: 604.794.3315 • Fax: 604.794.3085

Email: pia@honeyviewfarm.ca

Website: www.honeyviewfarm.ca

A local Fraser Valley apiary which pollinates berries and produces honey and pollen. Visit the farm store to sample honey from flowers like blueberries, blackberries, raspberries and more, all produced by our own beehives. April to October, you can see the wall of bees - behind glass - and how the bees work and dance. You can try to find the Queen, examine the honey comb and smell the beeswax candles. When honey is being extracted or packaged you can watch behind glass. Please check our website for specials. Self-guided tours are free. Guided group tours by appointment \$4 per person or just come and try the honey. **Store open: Apr-Sep, every day, 10am-5pm; Oct-Dec, Mon-Sat 10am-5pm; Jan-Feb Mon-Fri, 10am-4:30pm.**

4 Forstbauer Family Natural Food Farm

Hans, Mary and Family Forstbauer
49350 Prairie Central Road, Chilliwack
Tel: 604.794.3999 • Cell: 604.854.0090

(U-pick blueberries at
7496 Gibson Road, Chilliwack)
Blueberry Tel: 604.793.0517

Email: farm@forstbauer.com

Website: www.forstbauer.com



Healthy Food from Healthy Soil... At Forstbauer Farm we farm with the understanding that the life & health of the soil is vitally important insuring that the food we produce has everything it needs to fuel our bodies. We invite families to visit our farm during the summer and experience picking your own blueberries and harvesting some of your vegetables. You are able to observe chickens and cattle as they wander freely in their open space making it possible for us to have certified organic free range eggs and organically raised grass fed and finished beef. Certified organic/biodynamic blueberries, strawberries, beets, green beans (Blue Lake and Fortex), carrots, chard, dill, pickling and regular cucumbers, kale, lettuce, salad and

Continued...

mixed Asian greens, potatoes, pumpkins (sugar pie and jack-o-lantern), summer and winter squash, zucchini, and most other vegetables are grown on our family farm. Ask us for information on certified organic/biodynamic Okanagan fruits. Visit us year around at farmers' markets in Vancouver or the Fraser Valley. Please call the farm or visit our website to see if we are at a market near you. Visit the farm by appointment to experience harvesting your own certified organic/biodynamic fruits and vegetables. We have an abundance of frozen blueberries. Certified Demeter & Certified Organic. We now take all major credit cards. **Open: All year, please phone ahead before visiting farm.**

5 Fantasy Farms Inc.

Gary and Lisa Moran

9423 Gibson Road, Chilliwack

Tel: 604.792.3407 • Fax: 604.792.7007

Email: info@fantasyfarmsinc.ca

Website: www.fantasyfarmsinc.ca

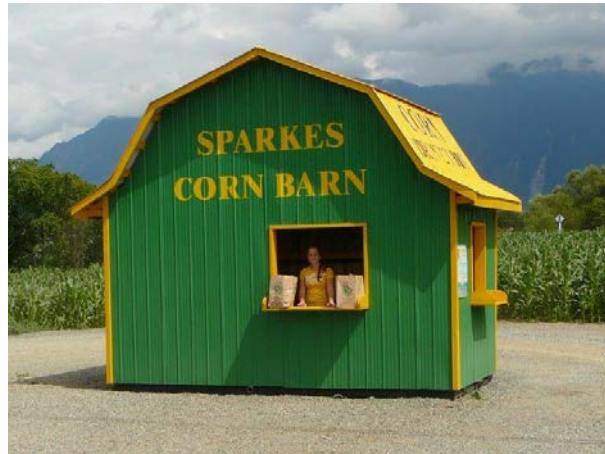
Nestled in the heart of the Fraser Valley surrounded by Mountains sits Fantasy Farms; fast becoming known as the most entertaining Festival Farm for families to visit! The Season Starts with Petey's Easter Eggstravaganza followed by the 5th annual Chilliwack Garlic & Rockabilly, Rock Music Festival in early September followed by Petey's Pumpkin Patch, The Reapers Haunted Attraction and the Maze of Terror (fun in the day & scary at night), followed in December by Petey's Country Christmas adventure. At Fantasy Farms we grow garlic, pumpkin, gourds, squash, decorative & sweet corn. **See our website for days and hours of operation.**

The Source for Locally-Grown Fresh Produce

HOURS OPEN
Monday to Saturday
9:30am to 6:00pm

"We grow the widest range of local fresh produce picked daily in the Lower Mainland"

15649 40th Ave, Surrey
604-576-9297
www.marysgarden.ca



Sparkes sweet corn is locally grown in Chilliwack, BC and is picked fresh and delivered directly from our fields to our convenient drive-thru stands daily, ensuring it comes to you ripe, fresh, and full of flavor – we guarantee it! Just look for the green and yellow hip roof drive thru barns throughout the upper Fraser Valley or call 604.794.0198 or e-mail us at sparkescornbarn@gmail.com to place wholesale or freezer orders.

11 locations for fresh Chilliwack corn; we're farm # 1. Look for our locations on the map pages at:

Agassiz

- At the turnoff on Hwy #9

Popkum

- Next to Ranchers Restaurant

Chilliwack

- On Luckakuck Way just east of Superstore
- On Luckakuck Way next to Husky gas station
- On Yale Road in front of Little Mountain Greenhouses
- On Lickman Road by Tim Hortons
- On the corner of Evans road & Sumas Central
- In the parking lot next to Kens Tire and wheel on Alexander Avenue

Vedder

- At the corner of Promontory Road and Chilliwack River Road

Abbotsford

- At the Visitor Information Centre parking lot on Sumas Way and Marshal Road
- Watcom Road exit, north at the Shell Station

Look for us in **Vernon** and **Kelowna!**



See our website - www.chilliwackcorn.com - for up-to-date information on locations, hours and available varieties.

6 Little Mountain Garden Centre & Florist

Marc Shane
47558 Yale Road East, Chilliwack
Tel: 604.792.4403 • Florist: 604.792.7888
Toll Free: 1.800.555.7098
Fax: 604.792.7766

Email: littlemountaingreenhouses@shaw.ca
Web: www.littlemountaingardencentre.com

Come visit and tour Little Mountain Greenhouses Garden Centre & Florist and see why we are becoming the #1 destination for all of your garden products. We are open year-round and grow 90% of what we sell, being the only true grower direct retailer in the Chilliwack area. Shop our garden centre for the latest and greatest in plant material, inspiring home decor ideas, and homemade fudge. Visit us at imgflorist.com and order beautiful bouquets and flower arrangements today. We deliver worldwide. **Open: Every day except Dec 25, 26 and New Year's Day. See our website for hours.**

7 Pine Meadows Tree Farms Ltd.

Arthur and Tim Loewen
47036 Prairie Central Road, Chilliwack
Tel: 604.792.2632 • Cell: 604.793.3090
Fax: 604.792.0873
Email: artlois@shaw.ca
Website: www.pinemeadowstreefarms.ca

U-cut or we cut Christmas trees from one of the largest U-Cut farms in BC. We have 15 acres of trees with over 12 species to choose from in a large range of sizes. We have pre dug, live trees available, also fresh trees cut daily. Bring your family and make memories. Free apple cider and hot chocolate. Enjoy a walk among the trees, experience the fragrance and breathe the fresh air. Remember to bring your boots on wet days. We supply saws. We are 1 km off highway #1 at exit 123. Arrange for an educational tour any time of the year. We do tours for schools, colleges, seniors, foreign travel groups etc. **Open: Nov 21-Dec 24, everyday 9am-6pm.**

8 Wenro Farms

Pete and Wendy Romeyn
6550 Chilliwack River Road, Chilliwack
Tel: 604.793.5625
Email: wendyromeyn@gmail.com

On our farm we pick our produce daily, to give you the best, freshest flavors you will ever experience. All the produce grown on our farm is pesticide free, if we do spray, we use only products that have been approved for organic production. Our delicious ever-bearing strawberries, tomatoes, cucumber, peppers, herbs, zucchini, squash, onions and garlic are available from mid-May through October, as they come into season. In our Country Store look for jams, frozen berries, apple pies, dried apples and fruit leather. We also sell Smits & Co. cheese and of course the ever popular free-range farm fresh eggs. Come and enjoy a hot cup of coffee or treat yourself to a delicious Island Farms ice-cream cone, we carry 12 flavors. Saturdays have become extra special with our famous fresh, old fashioned cinnamon buns, baked in our own country kitchen. Nothing beats the aroma of fresh bread and cinnamon! During the month of May we sell beautiful hanging baskets in time for Mother's Day. For a real farm experience come and enjoy the chickens and the sheep, and say hi to "Pokey" our donkey. We are a small farm and urge you to come early in the day to avoid disappointment or call us to reserve your order. **Open: May 4 to Aug 31 Mon-Sat 9am-6pm; Sept & Oct Tue-Sat 9am-5pm; Nov 1 to May 4 Fri & Sat 9am-5pm. Closed Sundays.**

9 Yarrow Elderberry Farm.

Henning and Jan Jensen
44497 Vedder Mountain Road, Chilliwack
Tel: 604.823.6897
Email: yarrowelderberry@shaw.ca
Website: YarrowElderberryFarm.com

Welcome to Yarrow Elderberry Farm. We grow fresh elderflowers and black elderberries. **Open: daily, mid-May (elderflowers); mid-Aug-mid-Sep (elderberries). Crop is limited so please call ahead for availability.**

10 The Farm Store at Fraser Valley Specialty Poultry

4540 Simmons Road, Chilliwack
Tel: 604.798.9044
Fax: 604.823.4306
Email: store@fvdg.com
Website: yarrowfarmstore.com



All your local goods in one place! Our Farm began in 1973 as Fraser Valley Duck and Goose and we have since expanded our farming to include Organic Chicken. We excitedly opened our new store last summer and now carry locally sourced beef, pork, lamb, cheese, dairy, coffee and a large variety of breads and baked goods. We still raise our own ducks, geese and chicken right here on the farm! Come see the large amounts of local goodness our store has to offer! **Open: Year round; Mon-Fri 8am-6pm; Sat 10am-6pm.**

www.bcfarmfresh.com



Opening mid August, we would love to see you at our farm. Our Country Store features freshly-pressed Apple Cider (from our very own apples), artisan veggies, fudge, pies and more! Until then, see you at a local farmers' market!



604.853.3108

333 GLADWIN RD., ABBOTSFORD

TAVESFAMILYFARMS.COM



APPLE BARN

11 The Local Harvest Farm Market

7697 Lickman Road, Chilliwack
Tel: 604.846.6006

Website: www.thelocalharvest.ca

At The Local Harvest Market we are committed to providing our community with naturally grown foods that are produced right here on our 30 acre farm and in our region. At our convenient location in Chilliwack, just south of Highway 1, we grow an amazing selection of vegetables, fruits and herbs using natural growing techniques. Our mission is to help create a sustainable food system in Chilliwack that can be modeled worldwide and we take the time to share our mission and vision with everyone through interactive farm tours. We invite everyone to come to our farm and market to reflect on the importance of agriculture and to watch and learn how our farmers grow the freshest, tastiest fruits, herbs and vegetable imaginable. You'll also enjoy learning about our curious alpacas and will be able to touch and lead these animals around in their pasture. We offer a wide range of activities for the whole family that will give you a genuine farm experience. Shop in our country market for wholesome, fresh local foods. Relax in our picnic area enjoying foods from our bakery and farm-sourced café. Tour our farm on foot, in our barrel train or on the hay wagon. Join an interactive workshop to learn about cooking and canning with whole foods. Here's fun for the whole family every season of the year! **Open: Mon-Sat from 9am-6pm. Closed Sundays and stat holidays. Check our website for special farm related events.**

12 Anita's Organic Market

At Anita's Organic Grain and Flour Mill Ltd.
7697 Lickman Road, Chilliwack
Tel: 604.823.5547 • Fax: 604.823.5546
Email: market@anitasorganic.com
Website: www.anitasorganic.com

Same great products at a new location.

Continued...

Look for us at The Local Harvest. We welcome you to visit Anita's Organic Market to learn about freshly stone-ground whole grain flours; ground on-site from an expansive array of Certified Organic and Kosher specialty grains. We provide high quality Certified Organic baking ingredients or novice and skilled artisan bakers, as well as those with specific dietary requirements. Our test kitchen works hard to develop delicious new products and healthy baking mixes to accompany the superb selection of premium culinary elements that will enhance your cooking and enrich your meals. Whether you are shopping for legumes, flaked grains, freshly milled flour, incredible pancake and waffle mixes, easy organic cookie mixes, or the best tasting whole grains, you will find it and many more specially picked organic products at Anita's Organic Market. Please check for upcoming events at our website. **Open: Mon-Sat 9am-6pm, Closed Sundays. Please check our website for statutory holiday openings. (Please pre-order for large, bulk bag pickups.)**

13 Chilliwack Original Corn Maze

John and Diane Bruinsma, Wendy and Lloyd Taekema
41905 Yale Road West, Chilliwack
Tel: 604.819.6203 or 604.845.7771
Email: info@chilliwackcornmaze.com
Website: www.chilliwackcornmaze.com

Located in the beautiful Greendale area, come and challenge yourself to finding the one true way through our unique maze. You are provided with interactive passports that help lead you through the maze. Our farm features picnic areas, fire pits, animal displays, jumping pillow, tire town, pedal carts, and much more is available to people who make their way to our farm. We have large selection of pumpkins and ornamental gourds. Pre-arranged, off hour bookings available, please call or email. **Open: Aug 21-Sept 7, Tues-Sun 11am-9pm; Sept 10-Oct 31, Thurs & Fri 6-9pm, Sat 11am-9pm, Sunday and holidays, 11am-6pm.**

14 Yellow Barn Country Produce

Marjorie and Alex Hodgins-Smith
39809 No. 3 Road, Abbotsford
Tel: 604.852.0888

Like us on Facebook

The Yellow Barn invites you to enjoy our country style market. We are the big Yellow and Green barn located on #3 Road at the Yarrow, Cultus Lake Exit 104, situated approximately half way between Abbotsford and Chilliwack (with easy highway access). We offer our outstanding sweet corn along with the freshest local seasonal vegetables and fruits from the Valley and the Okanagan. Every day we bring in fresh handmade bread, fruit pies and cinnamon buns made from scratch. We stock many local products, such as Smit's Cheese, Elias Honey, Marilyn's Salad Dressings, Rempel's Mennonite Sausage and assorted Continental Sausage, Helmi's Perogies, Schneider's Popcorn supplies, True North Kettle Corn, Agassiz Hazelnuts and many more BC-produced products. In our coffee shop you can enjoy breakfast all day and lunch to eat in or take out. We offer soup, sandwiches, coffee, tea, and light snacks. We also offer hand-scooped, Island Farms ice-cream in an assortment of flavours. Come visit us. **Open: All year, every day. Fall and winter, 7:30am-6pm; late spring and all summer, 7:30am-8pm.**

15 Wisbey Veggies

Joy and Bruce Wisbey
40326 No. 3 Road, Abbotsford
Tel: 604.823.4617 • Fax: 604.823.4619

Homegrown veggies! We grow almost everything you would find in a veggie dictionary, a culinary herb garden, flower gardens, and pumpkins galore. Also available are local berries and apples, hothouse tomatoes, Okanagan fruit and in season, the best fresh, picked daily corn! You are invited to experience our down-home country atmosphere. Come visit soon! **Open: Jun 14-Oct 31, Mon-Sat, 9am-6pm; Sun, 10am-5pm; Nov 1-Dec 23, Wed-Sat, 10am-5pm. From Nov-May a self-serve is set-up at the main farm at the southwest corner of Tolmie and Number 5 Road. Potatoes and root crops are available.**



KPU

lcfm.ca

www.bcfarmfresh.com



**MAY 20–OCT 14, WEDNESDAYS,
2–6:30PM**

**Kwantlen Langley Campus Courtyard
20901 Langley Bypass**

30 minutes FREE parking

Farm Fresh Reference Guide 2015-2016

**16 KBF Nursery and Farm Market
Dave Khakh**

Now with three locations:
40040 No. 3 Road, Abbotsford (main farm)
45495 Yale Rd, Chilliwack
6735 Evans Rd, Sardis
Tel: 604.852.9033 or 778.552.7701
Email: davekhakh@hotmail.com

KBF Nursery and Farm Market is a family owned and operated business since 1980. We are one of the largest farms in the heart of the Fraser Valley growing over 800 acres of fresh berries, produce, and nursery stock. You will love our sweet raspberries, strawberries and blueberries available all summer long. We grow a huge variety of Sweet Corn picked fresh daily and all the other vegetables including Peas, Beans, Beets, Broccoli, Brussels Sprouts, Cabbage, Cauliflower, Carrots, Cukes, Potatoes, Pumpkin, Radish, Squash, Taiwan Cabbage, and Russian Garlic. Nursery stock is available year round in pots - please contact us for any nursery stock orders outside of our regularly open months. We specialize in flowering cherries, crab apples, Japanese Maples, fruit trees and hedging cedars. Come visit our farm market and nursery and see for yourself our great quality and prices. Delivery available, wholesale welcome. **Open: Jun-end of Sept, 10am-6pm. Main farm open to end of Oct.**

17 Birchwood Dairy Farm

Len and Grace Krahn
1154 Fadden Road, Abbotsford
Tel: 604.857.1315 • Fax: 604.556.0814
Email: birchwooddairy@shawbiz.ca
Website: www.birchwooddairy.com

Visit our little Country Farm Market and enjoy our wonderful old fashioned gourmet ice cream and frozen yogurt, European style yogurts, assorted cheese, fresh cheddar curd, milk products and Feta cheese. We have fresh produce, a delicatessen, enjoy light lunches and more. The farm experience includes an outdoor eating area, small animal farm display and a play area for the summer months. Enjoy a "Country Experience" in the beautiful Fraser Valley. Pre-booked Educational Farm Tours and Birthday Celebration available. Parking available for large groups and clubs. **Please check our website or call our office for store and holiday hours.**

85 Sumas River Farm Ltd.

Nathan and Heather Gelderman
36765 Nelles Road, Abbotsford
Tel: 604.755.3045
Email: h-gelderman@hotmail.com
Website: www.sumasriverfarm.com
Facebook: Sumas River Farm



Welcome! Same farm and same great certified organic blueberries, but we now lease the farm from Joe. We hand pick, clean and sort our berries. Whole frozen are available during the season. Call ahead for large orders. We now take all major credit cards. **Open July 1-Aug 15, 11am-5pm daily. Check our website for possible earlier opening dates.**

18 The Country Key

Riva and Maria Driesen
1033 York Road, Abbotsford
Email: rivadriesen@me.com
Tel: 604.556.6844

Come stop by our farm stand this summer for our fabulous long purple eggplants. **Open: mid-Aug-late Sept; Tue-Sat 10am-3pm.**

19 Gelderman Farms Ltd.

Jerry and Audrey Gelderman
35805 Vye Road, Abbotsford
Tel: 604.864.9096 • Fax: 604.864.9097
Email: jageld@shaw.ca
Website: www.geldermanfarms.ca

Gelderman Farms is a family operated farm located in Abbotsford. We sell pork, blueberries and compost. We are certified by an independent auditor that we raise our pigs without the use of antibiotics, they are vegetable grain fed with whey and are Canadian Quality Assurance Certified. They are raised in large pens, bedded on sawdust in naturally ventilated barns with natural lighting. Raising them this way has created a high quality pork that "tastes the way pork used to taste". Our blueberries are Canada Gap certified and are grown using organic principles. We sell fresh in season and frozen for the rest of the year. The compost comes from the sawdust the

pigs are bedded on and is an excellent soil amender. **Open: Year-round, Mon-Sat. Please call before you come to ensure that we are around to help you.**

20 Nature's Pickin's Market

Doug and Caroline Phillips and Nature's Crew
1356 Sumas Way, Abbotsford
Tel: 604.855.3374 • Fax: 604.855.3371
Email: info@naturepickins.ca
Website: www.naturespickins.ca
Facebook: Nature's Pickin's Market

With the back drop of Mount Baker, Nature's Pickin's Market is surrounded by fields of blueberries, blackberries, and the fall harvest of pumpkins, gourds and so much more. Neighbors like goats on the roof and the EcoDairy in partnership with Science World; Nature's Pickin's Market enjoys a unique location working with other farms and farmers. **Open: year round, seven days a week 9am-6pm.**

21 EcoDairy in Partnership with Science World

1356 Sumas Way, Abbotsford
Tel: 604.557.5481 • Fax: 604.557.1480
Email: info@ecodairy.ca
Website: www.ecodairy.ca

EcoDairy in Partnership with Science World is a one-of-a-kind demonstration farm promoting agricultural science and technology education to inspire future innovation in the agriculture sector. With help from the EcoDairy mascot Vicki the Cow, visitors can test their skills at milking a cow, take a journey through a cow's digestive system or experience cow-comfort for themselves on our fold-down cow bed. The EcoDairy experience also includes touring our dairy barn where visitors meet the Vitala Cows face-to-face while learning about the innovations that make dairy farming kinder to our animals and to our planet. We pride ourselves on all of the ways we have found to make our operation more environmentally sustainable. For instance, our farm is home to BC's first on-farm, small-scale anaerobic digester as part of a pilot project in partnership with CowPower BC. The anaerobic digester converts cow manure collected from the barn floor into biogas which is used to supplement our electricity consumption. Rain water collection and storage is used to water our green roof, the perfect grazing space for our goats. The EcoDairy Discovery Centre was constructed using salvaged pine beetle wood instead of new timber from healthy trees. **Open: summer May long week-end to Thanksgiving: Mon-Sat 10am-5pm; Sun 11am-5pm. Winter: Tue-Sat 10am-5pm; Sun 11am-5pm.**



WEDNESDAY NIGHTS at SARDIS PARK

MAY - AUGUST FROM 4 PM TO 8 PM, RAIN OR SHINE

For more info visit www.theECOMarket.ca or check us out on Facebook!

Farm Fresh Reference Guide 2015 - 2016

22 Maan Farms Market & Estate Winery

Kris and Devinder Maan

790 McKenzie Rd., Abbotsford

Tel: 604.864.5723

Website: www.maanfarms.com

Follow us on Twitter, Facebook and Instagram

Providing our community with amazing strawberries, raspberries, and blueberries. An award winning u-pick experience and perfectly imperfect pumpkins has been our passion for three generations. Now, this summer we will be boasting a brand new pedal cart track, zip line, slide and petting zoo! Our country kitchen offers authentic local food and fresh made pies that will make you say Mmm Mmm and our wine tasting room is the place to be to indulge in our mouth-watering home grown fruit wines. A haunted corn maze is available in fall. School tours, birthday parties and corporate events are available for family fun. **Open: visit our website for hours of operation.**

23 Willow View Farms

Murray and Cheryl Siemens

288 McCallum Road, Abbotsford

Tel: 604.854.8710 • Fax: 604.854.8755

Email: willowview@shaw.ca

Website: www.willowviewfarms.com

Facebook: Willow View Farms

Family-owned and operated since 1960, Willow View Farms offers a variety of fresh fruits and vegetables direct from the farm. We are open the month of July for raspberry, Saskatoon, blackberry, blueberry and rhubarb sales. U-Pick raspberries, Saskatoons and blackberries are available (sorry no u-pick blueberries); please call for U-Pick times and availability. We are closed for the month of August. Sept 1st our country store opens for fall sales. We offer a wide variety of home grown produce. Bring the family out to the farm to U-Pick apples, plums, pears, corn and later on pumpkins. Our Apple Daze festivals take place on the last two Saturdays in September and our Pumpkin Daze festivals are every Saturday and Sunday in October. Enjoy hayrides (weekends only) petting barn, goat tower and our giant pumpkin patch. Pumpkins 1 pound to 200 lbs., Indian corn, gourds, squash, potatoes and fresh pasteurized apple juice are also available. No general admission. **Open: July-Dec: July 1-31 Mon-Sat 9am-5:30 pm. Sept & Oct Mon-Sat 9am-5:30 pm, Sun 11am-5:30pm. Nov & Dec Tues-Sat 9am-5:30pm. Jan - check website for hours and availability.**

24 Applebarn - Taves Family Farms

Loren and Corinne Taves

333 Gladwin Road, Abbotsford

Tel: 604.853.3108

Fax: 1.888.345.8972

E-Mail: info@tavesfamilyfarms.com

Website: www.tavesfamilyfarms.com

Facebook: www.facebook.com/tavesfamilyfarms

Twitter: @TavesFarms

Instagram: @TavesFarms

Taves Family Farms participates in farmers markets throughout the Lower Mainland. The popular 'stuff a bag of peppers' for \$6 is its signature item. Artisan vegetables, such as heirloom tomatoes, mini cucumbers and eggplant and berries line the shelves. For a complete list of markets visit our website. In the late summer, early fall families and friends have made a visit to the Applebarn an annual tradition. Attractions include a pumpkin patch, hayrides, Corn Quest Maze, petting barn, pony rides, U-Pick apples, bouncy barn, two massive jumping pillows, Corn Gun, Pumpkin Cannon, freshly roasted sweet Fraser Valley corn, Apple Cider slushies, and so much more! The Applebarn opens in August and closes in November. Pumpkins by the thousands can be picked from the patch all season. The Country Store is stocked with a variety of fresh apples, farm-fresh Apple Cider, caramel apple and candy corn treats, farm-fresh pies, flavoured honey, preserves, pickles, spreads and other unique gift items. A popular spot for birthday parties and corporate day trips. Field trips book

Continued...

quickly! Tour buses are welcome where guests pick large, sweet apples right from the trees – Jonagold, Honeycrisp, Gala, and Fuji to name a few! The Applebarn's 100% Natural Apple Cider can be found in Save on Foods and IGAs in the Lower Mainland. **See the website for hours of operation.**

25 Arjuna Berry Farms Ltd.

Mel Sidhu

32320 Huntingdon Road, Abbotsford

Tel: 604.556.9055 • Fax: 604.852.3979

Email: info@arjunaberries.com

Website: www.arjunaberries.com

Arjuna Berry Farms has been farming since 1975. We are a family-run farm that takes pride in the high standards we have maintained throughout the years. "Indulge in the Power of Berries". We only sell premium fruit and vegetables at competitive pricing. We provide blueberries, strawberries, fresh vegetables, Okanagan produce and our signature raspberries and blackberries. Arjuna is a strong believer in "buy local" and encourages everyone to stop by for a visit and enjoy the Arjuna experience. At "Arjuna Berry Farms" we offer U-Pick raspberries and blackberries....bring the whole family to enjoy the fun. We are now growing fall raspberries which will be available starting Aug.1 until Oct.30. So our signature raspberries will be available for 4-5 months out of the year. We guarantee all of our products we sell and maintain the highest standards of food safety. Also visit our sister company Freewaycedars.com if you are looking for hedging cedars. **Open: Jun 15-Oct 30, Mon-Sun, 10am-6pm.**



From Our Family to Yours

Visit us at our deli and bistro in Langley or check us out online at:

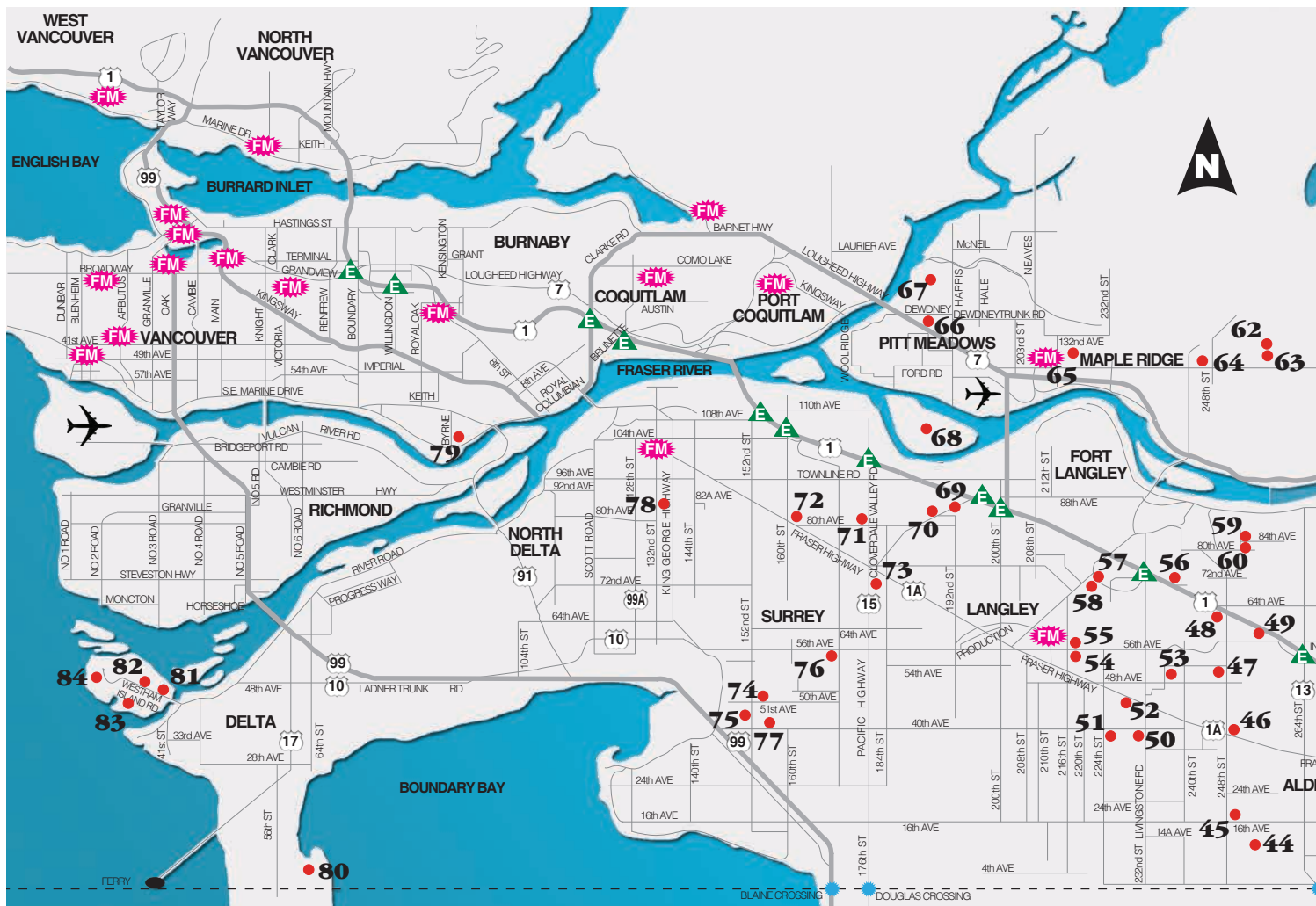
24726 - 52nd Avenue, Langley, BC, Phone: 604-856-2431

Open Monday - Saturday 9:00 am - 6 pm

Sundays 10 am - 5 pm

www.jdfarms.ca





3 Great Farmers' Markets

in 3 Great Locations

Lonsdale Quay - North Vancouver
Saturdays, May 2nd to October 24th, 10 am to 3 pm
Foot of Lonsdale, North Vancouver

Ambleside West Vancouver
Sundays May 3rd to October 25th,
New Times: 11am to 4pm

1500 Block Bellevue Avenue in Ambleside, West Vancouver

Burnaby City Hall
Saturdays, May 2nd to October 24th, 9am to 2pm
Located at Burnaby City Hall 4949 Canada Way
at Deer Lake Parkway, Burnaby

Organic, Non Organic Produce, Fruits, Plants, Eggs,
Meats, Herbs, Salsas, Honey, Fish, Breads, lots of local
crafts and so much more.

- Book Exchange
- Live Music
- Kids Play Tent
- Games Table
- Newspaper Reading Area.
- Kids Day 3rd weekend monthly.



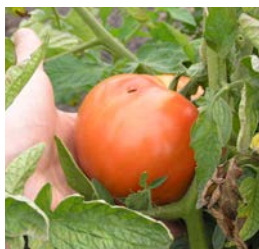
For more info check
artisanmarkets.ca

Call
604.318.0487 or
604.628.8226
info@artisanmarkets.ca



SURREY URBAN FARMERS MARKET

**Building Community
through Local Food**



Wednesdays June 10 through
Oct. 7th from 1pm – 6pm.
Civic Plaza by Surrey City Hall
and the City Centre Library.
13450 - 104th Ave

www.surreymarket.org info@surreymarket.org

Vancity



*Celebrating what is made,
baked, grown and raised in
British Columbia*

COQUITLAM'S FARMERS MARKET

Sundays 9am to 1pm
May 10th to October 25th
Poirier St & Winslow St. Coquitlam

PORT MOODY WINTER FARMERS MARKET

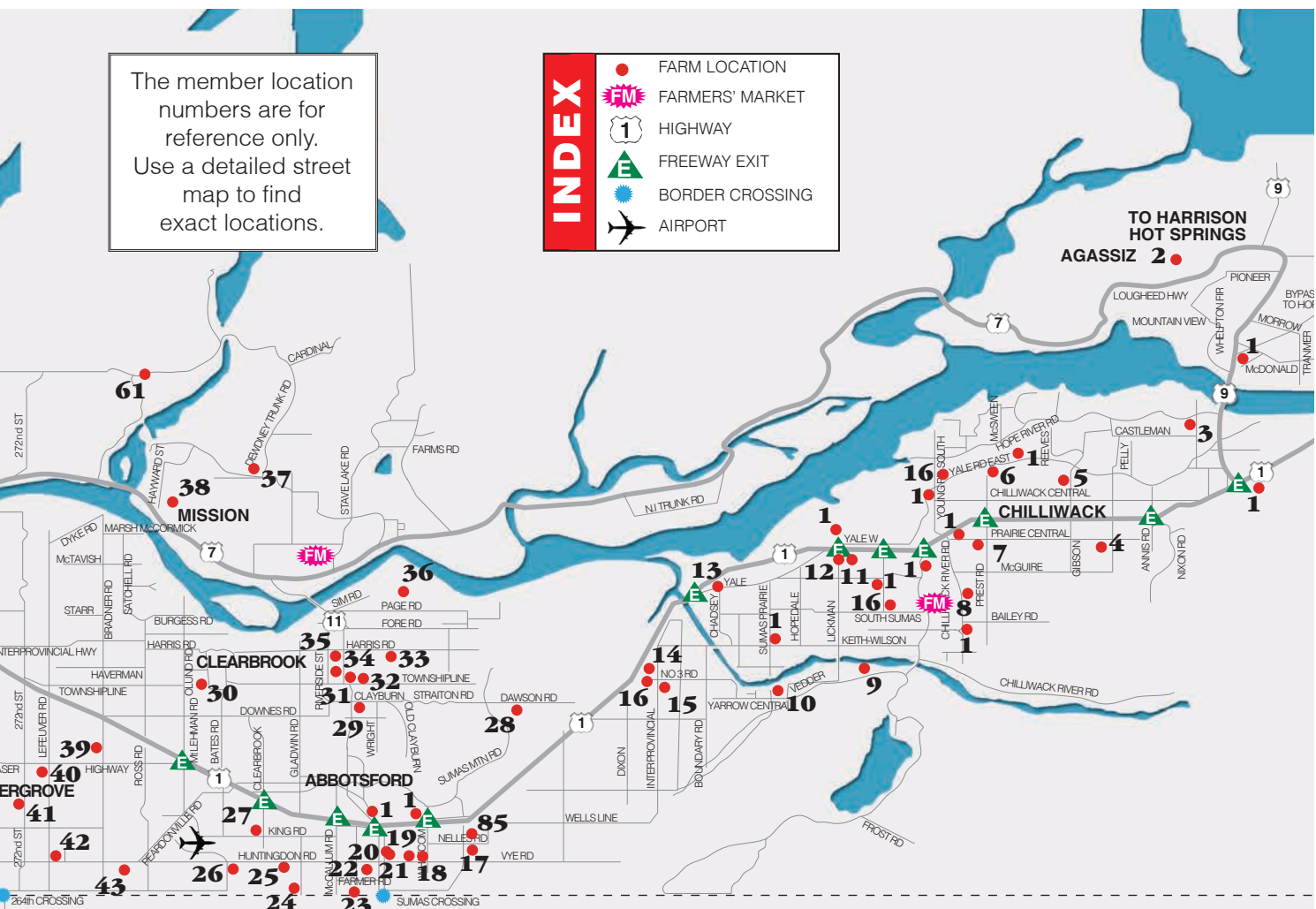
Every Sunday 10am to 2pm
November 1st, 2015 to April 24th, 2016
Port Moody Recreation Complex, 300 Iocco Road

For More Information visit our website
www.makebakegrow.com

The member location numbers are for reference only. Use a detailed street map to find exact locations.

INDEX

-  FARM LOCATION
-  FARMERS' MARKET
-  HIGHWAY
-  FREEWAY EXIT
-  BORDER CROSSING
-  AIRPORT



KRAUSE BERRY FARMS & ESTATE WINERY

WE ARE A WORKING DESTINATION FARM!
 Saddle up in our ESTATE WINERY for a taste of our award winning wines! Enjoy the family friendly Market, Bakery, Porch Restaurant, KB Corral & Cookies Kitchen Restaurant. Sign up for a cooking class with Master Chef Wolfgang at The Farmer's Table Cooking School!

6179 - 248TH STREET, LANGLEY, BC V4W 1C3
 T 604.856.5757 KRAUSEBERRYFARMS.COM

FARMERS TO BOOT

Bonetti Meats
 AND ITALIAN SPECIALTY PRODUCTS

In house sausage, bacon, ham. Custom cutting, wrapping, smoking

CARLO BONETTI
 3986 248th Street
 Aldergrove, BC V4W 1Z2

Retail Sales
604-856-2187
 Fax: 604-856-2197

26 Bumbleberry Farms

Malkit and Lakhvir Brar
31580 Huntingdon Road, Abbotsford
Tel: 604.835.3416 • Fax: 604.852.4605
Email: malbrar@hotmail.com

We invite you to visit our home farm on Huntingdon Road, where we grow the finest varieties of berries available in the Lower Mainland. Our family has been growing fruit near the Abbotsford Airport since 1969 on some of the richest and most valuable soils in Canada. Although our farm has grown a lot since then, Bumbleberry Farms' fruit stand is still a family run business offering our premium fresh raspberries, blueberries, strawberries, and blackberries grown right here in Abbotsford on our own fields – not imported from other farms. Save your back picking strawberries on our raised beds, and roam through our clean rows of raspberries and blueberries in search of that perfect berry...just try not to disturb our bumbles bees who are hard at work creating this beautiful fruit! We have containers for purchase in case you forget yours. No time to pick? We always have fresh fruit available at our stand in small and large packs. Need something for dessert or a gift for that barbecue tonight? Pick up a 6-pack or two of your favorite fresh berries. Our fruit is safe, priced right and fresh from our farm. Great pies, jams, deserts and smoothies start with great berries from Bumbleberry Farms. Come see us this season! **Open: Early Jun-Sept, 7 days a week, 9am-6pm.**

27 Neufeld Farms

Dan and Audrey Neufeld
32215 King Road, Abbotsford
Tel: 604.859.2829 • Fax: 604.859.2820
Email: info@neufeldfarms.ca
Website: www.neufeldfarms.ca

Neufeld Farms is a family farm and farm market. We grow and sell free run hormone free chickens and other frozen meats. We have "start from scratch" basics or "ready to go" meal ideas for your weekly shops or quick stops. The Berry Barn buzzes in summer with our home-grown strawberries, raspberries, sweet corn, pickling cukes, pumpkins and soft ice cream. **Open Year Round, Mon-Sat, 9:30am-5:30pm, Closed Holidays. Summer hours, Mon-Sat, 9am-6:30pm, Sun and holidays, 11am-4pm.**

28 Sumas Mountain Farms

Trevor & Kelly Newton
37810 Dawson Road, Abbotsford
Tel: 604.853.6333
Email: info@sumasmountainfarms.ca
Website: www.sumasmountainfarms.ca



Sumas Mountain Farms is a producer of certified-organic, lifetime grass-fed and finished beef locally right in the Lower Mainland/Greater Vancouver. We also are the only local producers of certified organic soy-free chicken, certified organic soy-free pastured pork, and certified organic soy-free eggs. Our layer chickens have living pasture to forage on, year-round. Our animals are raised on certified-organic pastures in the heart of the Central Fraser Valley, Abbotsford. Our beef is dry-aged, and available in small or large quantities, by the cut. Our organic certification is through Fraser Valley Organic Producers Association. We also offer specialty products such as grass fed pepperoni, salami, breakfast sausage, farmer sausage, and more. Plus, we have a wide selection of organ meats and unusual cuts you won't find elsewhere. Sumas Mountain Farms is a family-owned farm, and our caring approach to the animals and the land results in beef, pork, chicken and eggs that are truly healthy. Sumas Mountain Farms is also SPCA certified for animal welfare. The quality of the meat is exceptional, and the flavor is unsurpassed. Plus, our meat products are more nutrient-dense, and they are packed with healthful Omega-3's. You can place your order directly on our website, and pickup directly from our farm. We also offer direct-to-your-door delivery throughout the Lower Mainland. **Open: All Year Round By Appointment Only.**

29 Clayburn Berry Village

Parm & Satwinder Bains
34486 Clayburn Road, Abbotsford
Tel: 604.776.FARM (3276)
Email: info@clayburnberryvillage.com
Website: www.clayburnberryvillage.com



Clayburn Berry Village is a family operated certified organic blueberry farm located in historical village of Clayburn; close to lovely walking and biking areas out in the country. Come out for a visit and step right into nature; enjoy a walk and the amazing views of Mount Baker and the North Shore Mountains. We invite you and your family to our farm to taste some of our many berry delicacies like jams, chipotle, honey and pies and to take away our fresh hand-picked organic blueberries for your eating pleasure all day long. Our organic as well as conventional blueberries are grown with a focus on sustainability for our land and water and with an environmentally

Continued...

conscious footprint. We also offer frozen grade A blueberries for all your freezing needs all year round. **Open: July-Sept 30th, Mon-Sat 10am-6pm and Sun 11am-5pm.**

30 Goat's Pride Dairy at McLennan Creek

Peter and Jo-Ann Dykstra and Family
30854 Olund Road, Abbotsford
Tel: 604.854.6261 • Fax: 604.852.1093
Email: info@goatspride.com
Like us on Facebook and follow us on Twitter

We produce goat milk, yogurt, and several kinds of cheese on site at our true working farm. You can buy them at our farm store along with other products like goat milk soap, Rooibos tea, natural honey and eggs. We offer farm tours for \$5.00 per person and cheese tastings at \$2 per person; by appointment only, for groups of 12 or more with special activities such as goat milking demonstration and visiting all our farm animals. **Open: Year round, Mon-Sat, 9am-6pm. Closed Sundays and religious holidays. Come join us for fun activities at our Open House Saturday, July 18, 12 noon-4pm. Open House admission is free.**

31 Lepp Farm Market

Rob and Charlotte Lepp
33955 Clayburn Road, Abbotsford
Corner of Abbotsford-Mission Hwy (Hwy 11) and Clayburn Road
Tel: 604.851.5377
Email: info@leppfarmmarket.com
Website: www.leppfarmmarket.com

Whether you are cooking for your family or guests, Lepp Farm Market is a great place to start your shopping. The Fraser Valley meats come from animals raised without antibiotics or added growth hormones. The dry-aged beef, free-run poultry and high-quality pork are sold fresh at the full-service meat counter and also frozen, as well as spiced, stuffed or marinated. Fresh and smoked sausages are made on-site, using the same non-medicated meats. Homemade-style lunches are served The Farmer's Table Café every day, along with roasted chickens and other hot foods to take home for dinner. With cooking classes offered every week, you can enjoy a dining experience using many of the gourmet foods that are available at the market. Farm fresh fruits and vegetables are available year-round, many of which come from Lepp Farms. Come and see what Rob and Charlotte have been dreaming of and are thrilled to offer to the Abbotsford-Mission community and beyond! **Open: All year, Mon-Sun, 9am-6pm.**

32 Rockweld Farm



Tim and Flo Rempel

34205 Townshipline Road, Abbotsford

Tel: 604.859.1199 or 604.217.4500 • Fax: 604.859.1199

Email: rockweldchicken@gmail.com

Website: www.rockweldfarm.com

Local...Healthy...Ethical. Our chicken and eggs are fed certified organic feed and are medication free, BCSPCA Certified, federally inspected, and air-chilled. We have fresh and frozen whole birds by the piece or by the case. We also offer fresh or frozen ground breast or drum meat. Custom cuts can be ordered. We now carry a line of gluten-free, sodium-free chicken sausages, made from our chicken with no fillers or preservatives. We have breakfast, dinner, summer, pepperoni, and chicken breast jerky. We also carry wood smoked whole chickens. We have livers, hearts, necks, backs and feet. We also offer farm-fresh eggs. We also have local, grass fed and finished beef and Blue Comet Seafood which is Ocean Wise. See our website for all our products and prices. **Open: All year, Mon-Fri, 10am-5:30pm; Sat, 9am-5:30pm.**

33 Matsqui Blue Farms



Jennifer Cichanovich

34621 Hallert Road, Abbotsford

Tel: 604.859.8918 • Fax: 604.859.8918

Email: info@organicblue.com

Website: www.organicblue.com

Matsqui Blue Farms in the Fraser Valley beneath Sumas Mountain has been farming since 1948. At present, producing heritage varieties of blueberries that are rarely found anywhere else. Being one of the first "Certified Organic" blueberry farms, we take great pride in hand harvesting and handling of some of the best blueberries you'll ever taste. They're sold frozen all year and fresh when in season. Come by and taste the difference time makes. Come and enjoy the country by doing some u-picking. **Open: Every Saturday from 10am-3pm for frozen. Fresh available in season, usually July-Sept. Open 8am-6pm seven days a week.**

34 MSB Farm

Balbir Mahil/Harman Mahil

5331 Riverside Street, Matsqui

Tel: 604.557.0762 • Fax: 604.557.0774

Email: MSBFarm@hotmail.com

Website: www.msbfarm.ca

Continued...

Our family-owned and operated farm has been producing fresh, quality blueberries for over 25 years. Our blueberries are handpicked daily and we offer four different varieties throughout the season. Enjoy complimentary recipe ideas, storing and freezing tips! MSB Farm also works with other farmers to produce unique, local products for the community to enjoy. Besides offering blueberries, we sell different blueberry products from farms that we have partnered with. Come and try Blueberry Ice Cream or enjoy a jar of Blueberry Blossom Honey! Discounts are given if you bring your own containers. If you would like a tour of our operation, please call ahead for an appointment. **Open: July & August. Mon-Sat, 8am-6pm; Sun, 10am-5pm. Check our website in late June for exact opening date.**

35 Howard Wong Farms

Howard and Darlene Wong

5486 Riverside Street, Matsqui Village, Abbotsford

Tel/Fax: 604.853.3829

Howard Wong Farms, established in 1975, is a family-owned and operated farm and farmers' market, a customer-friendly business, offering top quality produce. We grow and sell many of our own products, including corn, green and red cabbage, pumpkins, and all squash plus many more veggies. We pride ourselves on our dedicated, friendly, knowledgeable staff. Open year round, our motto is "Farm Fresh Produce, Top Quality, at the best price". The Valley's Premier Farm Market. **Open: year round: Mother's Day weekend to end October everyday 8am-6pm; Nov 1 to early May Mon-Sat 8am-6pm.**

36 Warkentin Organic Farm



6934 Sandberg Street, Abbotsford

Tel: 604.826.7230

Email: rbwarkentin@aol.com

Warkentin Organic Farm has been family owned and operated since 1989. We grow four different varieties of blueberries as well as thornless blackberries. Strawberries, black currants, and new varieties of blueberries are now supplied through our two partner farms. Our focus has always been to provide a quality certified organic product; appearance, taste, and nutrition are top priority. We sell fresh and frozen berry products year round to wholesalers, retailers, and directly to the consumer. You can also U-Pick blueberries, but please contact us in advance to

Continued...

arrange a day and time for picking. The availability of our product supply varies depending on harvest schedules and on the time of year, so **please email or call us to ensure your order can be filled.**

37 Trout Creek Farm

Karl and Susan Eha

31474 Townshipline Ave, Mission

Tel: 604.826.5640 • Fax: 604.826.5631

Email: info@ucatchbc.com

Website: www.ucatchbc.com

Welcome to our BBB accredited, wheelchair accessible U-Catch where no fishing license is required, and our new Fishing/ Archery/Sporting Arms store. Our two ponds are stocked with lively, tasty steroid free rainbow trout that range in size from about 12" to over 24" and cost \$10.00 to \$50.00. We provide fishing tackle, bait and nets; we put your fish in bags with ice or in our fridge until you're ready to leave. We have BBQ's so you can eat your fish right away or grill hot dogs, hamburgers etc. We have picnic tables, and a 24' x 10' gazebo. Our bathroom is wheelchair accessible, and we have concrete sidewalks along our ponds for your safety. We also have a play area with swings and a slide. Young and old are welcome to come and enjoy our U-Catch. We host company parties, birthday parties and fishing tournaments. Call or email us to book a time for your group or family. We also teach fly fishing and traditional archery. Please call ahead to make your appointment for fishing, or lessons and you can visit our store where we sell fishing, archery and sporting arms equipment. We accept Visa, MasterCard and debit cards and cash. **Open: April 1-October 31, 9am-6pm. Closed Wednesdays. Bookings are required.**

BC Fruit Growers
are asking for your help
to stop Apple Maggots.

Do NOT move apple, crabapple, hawthorn trees
or their fruit out of the Lower Mainland or Fraser Valley.

www.al.gov.bc.ca/cropprot/applemaggot.htm



38 Silverhill Orchard

Sonja & Raymond Barker
30111 Silverhill Avenue, Mission
Tel/Fax: 604.820.7957
E-mail: orchard1@telus.net

IMAGINE! REAL FRUIT; REAL FLAVOUR; REALLY LOCAL! We offer one of the best selections available of Local and Naturally grown Premium Quality Tree Fruits; 35 varieties of apples; cherries; peaches; STRAWBERRIES; haskaps; heirloom tomatoes; GARLIC and specialty garden produce. Our natural holistic approach to growing and protective crop tunnels allow us to use the most up to date sustainable and environmentally friendly growing methods all without the use of toxic chemicals. Our delicious ever-bearing strawberries are custom picked just for your order and are available from June to the end October. Our berries are grown up on tables under crop tunnels protected from the weather, letting us pick on a rainy day and giving us a perfect berry. In July our awesome cherries are ready. From August on.... apples; peaches; European plums; pears; with early Sunrise, Gravenstein, Gala, Ambrosia, Honeycrisp, Bramley, Elstar, Jonagold and many more. Order your fresh fruit tarts, pies and strawberry marshmallows for the weekend. Located just 3 blocks north off the Lougheed Hwy; turn north on Hayward Street; right on Anderson; left on Farrington which turns in Silverhill Ave. We are just 15 minutes east of Maple Ridge. Look for us at the Coquitlam Farmers Market (Sun) & New Westminster (Thurs). **Open hours: July to end November. FRIDAYS & SATURDAYS 10am-6pm or dusk. Other times by appointment; call ahead for u-pick info and availability of product.**

39 K & M Farms

Mark Robbins
28494 MacLure Road, Abbotsford
Tel: 604.857.8912
Email: kmfarms@shaw.ca
Website: www.kmfarms.ca



Pasture raised poultry – taste the difference! K & M farms raises poultry like your grandmother did – the natural way - outdoors, on pasture, with no antibiotics, hormones or animal by-products. Chickens and turkeys are kept on pasture, completely outdoors. Fresh turkeys are available for Thanksgiving and Christmas. Chickens are available fresh 5 times per year. Frozen product is available the rest of the year as supplies last. Check the web site for pick-up days for fresh product. **Open: Mon-Sat by appointment only.**

40 Campbell's Gold Honey Farm and Meadery

Mike and Judy Campbell
2595 Lefevre Road, Abbotsford
Tel: 604.856.2125
Email: info@campbellsgold.com
Website: www.bchoney.com

Campbell's Gold Honey Farm and Meadery is located in southwest Abbotsford adjacent to Aldergrove south of the Fraser Hwy. Watch for the big red barn. The farm focuses on operating a country store with Mead and other honey wines, local and B.C. honeys from various natural floral sources, creamed and flavoured honeys, and beehive products (pollen, propolis, beeswax, royal jelly etc.). Campbell's Gold provides pollination services to Fraser Valley farmers. Most of the products sold are produced on farm. Our honey wines include the traditional Mead, Melomels (honey wine with fruit or berries &), Pyment (honey wine & grapes), Metheglin (spiced Mead), and Cysor (honey wine & apple juice). We provide educational tours for all age groups to promote the economic impact of beekeeping in the Fraser Valley and the health benefits of honey and beehive products. If you have a group that wishes a unique experience we offer shopping tours and do group beeswax candle making classes. **Open: Country store, Tues-Fri, 12pm-6pm; Sat, 10am-5pm; Sun, 12pm-5pm. Closed Mondays, Statutory Holidays, and all of January. Call ahead to 604.856.2125 or e-mail us at info@campbellsgold.com to book an educational or shopping tour and/or candle making workshop.**

41 Cherry Jubilee

Marinus and Jo-Ann Horsting
2017 - 272 Street, Aldergrove
Tel: 604.856.5844
Email: cjubilee@telus.net

Montmorency "sour" cherries for pies, baking, jam, beer and wine. Picked fresh daily, and also available pitted and frozen. Crop is limited so please place your order in advance. **Open: July 18-26, 8am-3pm.**

42 Blueberry Junction

Linda Seale
28473 Huntingdon Rd, Abbotsford
Tel: 604.556.8066
Email: blueberryjunction@gmail.com
Website: http://www.blueberryjunction.ca/

Blueberry Junction is a multi-generation family farm. Our customers come back year after year to enjoy our ripe delicious NO SPRAY blueberries. We like to reward

Continued...

our loyal customers by offering 10 lb free for every 100 lb purchased. Your loyalty card is valid for fresh or frozen purchases and it never expires. We pack fresh in the season and have frozen blueberries available throughout the year. Would you like to U-pick? Our fields are clean and family friendly. We can sell you a picking container if you forgot your own and we have washrooms available. Find out more about our passion for sustainability. Ask us about our NO SPRAY fruit, our commitment to food safety, and our environmental initiatives. Go to our website blueberryjunction.ca or like us at BlueberryJunction on Facebook. **Open: fresh sales in season Mon-Sat 8am-6pm and Sun 2-6pm. Call us for frozen sales year round. Check our website to see when this year's fresh berries will be ready.**

43 Olera Organic Farm

Sharmin Gamiet and Riyad Reid
356 Defehr Road, Abbotsford
Tel: 604.856.7572
Email: olerafarms@shaw.ca



We are one of the founding certified organic farms in the Lower Mainland. We only produce certified organic fruit and vegetables. Our main crop is raspberries but we do produce an assortment of vegetables – over 40 varieties of tomatoes including heritage ones, broccoli, cabbage, green peppers, green onions, salad greens, beans, peas, leeks, celery, basil and other herbs, long English, baby and dill cucumbers. We freeze our raspberries so Individually Quick Frozen (IQF) and frozen crumbles are also available. Our produce is marketed to retailers, wholesalers and farmers markets in Vancouver and Coquitlam. We are easier to reach via email. **Open: June 1–Sept 30. By appointment only.**

44 Glorious Organics Co-operative

1374 - 256th Street, Aldergrove
Tel: 604.857.1400



Website: www.gloriousorganics.com

We grow organic salad mix, vegetables, culinary herbs, edible and cut flowers and some fruit. You can find us at the Kitsilano, Trout Lake (East Van), White Rock, and Langley Farmers Markets at the Organic Farm Connection stall. Check our website for details of our CSA program, tours, events and Kids Farm Camp or to arrange pick up of pre ordered produce. We also feature artisan items from an on-site forge and a wood-working shop. **Email or phone to arrange a farm visit or tour.**

45 Kensington Prairie Farm

Catherine Simpson

1736 – 248 Street, Aldergrove

Tel: 604.626.4395 • Fax: 604.626.4394

Email: info@kpfarm.com

Website: www.kpfarm.com

Welcome to Kensington Prairie Farm! Kensington Prairie Farm raises Huacaya Alpaca and Polled Hereford Cattle, produces quality hay/silage for the local market and offers contract equipment services to local farmers. Visitors are encouraged to tour the farm, visit the alpacas and shop at the retail store. The store features a broad array of specialized locally produced and imported alpaca fiber products, including roving, yarn, quilt batting, hand-knitted items, socks, hats, mitts, gloves, scarves, apparel, throws/blankets (including our luxurious 'Signature' collection), duvets, pillows and mattress pads. The farm also features alpaca meat products, artisanal honey and hormone-free, naturally raised beef (sides, quarters or by the piece). Farm tours available by appointment only. Fees applied to large groups (+10 people). **Open: Year round, Fri, noon-5pm, Sat, 10am-4pm or by appointment.**

46 Annie's Orchard

Jim and Mary Ann Rahe

4092 – 248th Street, Aldergrove

Tel: 604.856.3041

Email: rahe@sfu.ca

There is nothing like the crisp and juicy taste of a perfectly ripe apple fresh from the tree! That's what you'll get at Annie's Orchard. We offer apples and pears that we pick daily from our orchard, located just north of the Fraser Highway between Langley and Aldergrove. We grow more than 60 varieties of apples and 10 varieties of pears. That lets us pick and sell delicious fresh fruit, continuously from late July through October. Our apples include heritage varieties and regional favourites such as Gravenstein, King, Northern Spy, Bramleys, Cox Orange and Belle de Boskoop, as well as the best of newer varieties such as Honeycrisp, Gala, Ambrosia, Jonagold and Fuji. Please phone ahead to inquire about when the earliest varieties are ripe this year, and when particular varieties are available. We also sell container-grown fruit trees of varieties that are suitable for growing in home gardens in coastal British Columbia. **Open: mid-Aug-Nov, Mon-Sat, 10am-5pm. Closed Sundays.**

47 JD Farms Specialty Turkey Store

Jason Froese, General Manager

24726 – 52 Avenue, Langley

Tel: 604.856.2431 • Fax: 604.856.2437

Email: turkey@jdfarms.ca

Website: www.jdfarms.ca

JD Farms Specialty Turkeys are Certified Free of Antibiotics and Animal bi-products. Visit our farmgate store and sample fresh and smoked sausages and ready-to-eat meals. Check out our bistro serving fresh turkey sandwiches, turkey soups and more. Don't forget your Fresh certified JD Specialty Turkey for those special occasions at Christmas, Thanksgiving and Easter. **Open: Year round, Mon-Sat, 9:00am-6pm: Sun, 10am-5pm. Closed most Holidays.**

48 Krause Berry Farms & Estate Winery

6179 – 248th St, Langley

Tel: 604.856.5757 • Fax: 604.856.5794

Email: info@krauseberryfarms.com

Website: www.krauseberryfarms.com

A Working Destination Farm, growing the very best strawberries, raspberries, blueberries & blackberries for over 40 years. Enjoy the family friendly Market, Bakery, Porch Restaurant, KB Corral & Cookies Kitchen Restaurant serving our specialty products made here in our Harvest Kitchen. Saddle up in our Estate Winery for a taste of our award winning wines. Register for a cooking class with Master Chef Wolfgang at the Farmers Table Cooking School! **Visit www.krauseberryfarms.com for hours, to become a farm friend & to be the first to know what's happening at the farm.**



2015 VANCOUVER FARMERS MARKETS

TROUT LAKE
May 9 - October 24
Saturdays, 9am - 2pm

KITSILANO
May 10 - October 25
Sundays, 10am - 2pm

WEST END
May 30 - October 24
Saturdays, 9am - 2pm

MAIN ST STATION
June 3 - October 7
Wednesdays, 2pm - 6pm **New Time!**

KERRISDALE
June 13 - October 10
Saturdays, 10am - 2pm

YALETOWN
May 7 - October 29
Thursdays, 2pm - 6pm

MT PLEASANT
June 14 - October 11
Sundays, 10am - 2pm

For more information, visit www.eatlocal.org

www.HOPCOTTMEATS.ca :: 604.465.7799



Custom Butcher Shop
Local, Farm Fresh Meats
No Added Hormones or Antibiotics
Beef Raised on our 3rd Generation Family Farm
Dry Aged Minimum 28 Days

Know your farmer. Know Your food.

18385 Old Dewdney Trunk Rd, Pitt Meadows, BC



49 Goldwing Free Range Meats

Bonnie and Ed Curtis

25456 - 58th Ave, Aldergrove

Tel: 604.856.2888 • Fax: 604.856.4951

Email: goldwingfreerange@hotmail.ca

Goldwing Free Range Meats is located just 2 minutes west of the 264th St. exit, on the south side of Highway #1. At Goldwing, all our animals are raised free-range and non-medicated. This year we have available Beef: steaks, roasts, ground, pepperoni and jerky; Chicken: roasters, Cornish and portion pieces; Duck and Turkey: whole and cut up; Pork: roasts, chops, sausage, bacon, ham and ribs. We also have free range eggs. **Open: year round Tue-Sun, 12pm-6pm. Closed Mondays.**

50 Flowers From A Country Garden

3309 232nd Street, Langley

Tel: 604.530.4027

www.flowersfromacountrygarden.blogspot.com

Follow us on Facebook, Instagram & Pinterest.

We are a floral design company and
Continued...

Flower farm. Our Flower shop is right on the farm. From May to September our Farm is bursting with an abundant supply of seasonal blooms. We specialize in our "Signature" Garden bouquets, flower bunches and "Bucket of Blooms". Information regarding flowers for Weddings and Special events is available on our website. A complete Gallery of Flowers can be viewed on Pinterest. Subscribe to our website or "like" us on Facebook to keep up to date on flower availability. **Open: May-Sept; Flower Shop Hours: Mon & Tues: By Appointment. Wed-Sat: 10am-5pm (or later). Sunday: closed.**

51 Select Roses

Brad Jalbert

22771 - 38th Avenue (off 224th St), Langley

Tel: 604.530.5786

Website: www.selectroses.ca

Select Roses is a retail family nursery specializing in low maintenance garden roses. We grow a vast selection of the most disease-resistant and fragrant roses in Canada! Enjoy visiting our nursery and display gardens with thousands of

Continued...

potted roses especially chosen for this climate. We supply only #1 grade premium roses cared for by a family of rose lovers. Our experienced staff is happy to help you grow better roses! Come help us celebrate our 25th anniversary this year. **Open: season runs March 14-July 15. Hours are daily 10-5, Sunday 10-4. Call or check website for summer hours as they change depending on weather and our rose supply.**

52 Ralph's Farm Market

Ralph and Elizabeth Merk

22728 Fraser Hwy, Langley

Tel: 604.532.3033 • Fax: 604.534.4365

Email: info@ralphsfarmmarket.com

Website: www.ralphsfarmmarket.com

Enjoy a full line of fruit, vegetables, dairy, deli, bakery and natural foods. Our seasonal ice cream stand and gazebos creates a fun, relaxing experience all summer long. In fall of 2014, we planted blueberry bushes in our field. We look forward to selling fresh blueberries from our field in the future. Visit us on-line to get better acquainted. **Open: year round, 8am-6pm; closed Sundays and some holidays.**

53 Clearview Garden Shop

The Wein Family
23743 - 48th Avenue, Langley
Tel: 604.532.4070, 604-856-6131
Fax: 604.856.1457
Email: info@clearviewhort.com
Website: www.homofclematis.net
Follow us on Facebook and twitter

Clearview Horticultural Products (Canada's largest producer of Clematis and a leading producer of Geraniums) have been growing and wholesaling since 1970. Despite its rural setting, our retail store has developed a loyal following. It's the perfect place to find all your old favorites and exciting new plants just perfect for your garden. Enjoy a large selection and get expert advice on clematis, trellised vines, hanging baskets, unique and exciting patio pots, potted perennials, annuals, and much more. **Open: daily, Apr 14-Jun 30, Mon-Sat, 9am-6pm, Sun, 10am-4pm.**

54 The Veggie Patch

Robert Morgan, Stafford Richter & Rigel Vincent
22051 - 56th Ave, Langley
Tel: 604.356.4195
Email: upickveggiepatch@gmail.com
Website: theveggiepatch.ca

Good food, grown with TLC in the Township of Langley. We are located near the Langley Municipal Airport. We aim to give you the home vegetable garden experience of an abundant array of naturally grown veggies without the workload. We use old school farming methods, mostly hand tools to produce wholesome, nutritious, and fulfilling vegetables for you and your whole family to enjoy. At the Veggie Patch, we are proud to say that we grow vegetables like our grandparents and parents would have at the turn of 20th century. This means no GMOs, no toxic fertilizers and certainly no synthetic fossil-fuel derived pesticides. We grow a wide range of vegetables including: spinach, lettuce, peppers, radishes, kale, Swiss chard as well as your family favorites such as potatoes, pickling cucumbers, tomatoes and even garlic. **Open: May 1st to Oct 31st, Sat & Sun 10am-6pm. Please call ahead to confirm availability of produce.**

55 Dave's Orchard

Dave and Sheila Ormrod
5910 - 216 Street, Langley
Tel: 604.534.9979 • Fax: 604.534.0919
Email: dormrod@telus.net

Tree fruits and vegetables have been grown on our Langley (Milner area) farm for over 60 years. Apples, pears and potatoes are our main crops. We specialize in Gravenstein, Orenco, Macoun, Northern Spy and Bramley apples and Sierra pears. We also grow beans, beets, broccoli, cabbage, cauliflower, carrots, sweet corn, slicing cucumbers, gourds, pumpkins, squash and zucchini. All of our produce is home-grown and is sold through our farm stand from late July until everything is gone in the following spring. We also have cut flowers (zinnias and sunflowers) and Christmas trees in season. Duck eggs are available March through July only. Farm tours are available for pre-school through grade three classes in September and October. Children can see the crops being grown and can pick produce as they walk around the fields. Tours must be booked in advance with Sheila. Morning tours run from about 9:30 to 11:30 am and afternoon tours from about 12:30 to 2:30 pm. Book your tour early to avoid disappointment. **The farm stand is open daily including holidays from about August 1 until everything is sold by about March 1 of the following year. Hours are 9am-6pm in summer and fall; 9am-5pm in winter.**

56 Driediger Farms Market

23823 - 72nd Avenue, Langley
Tel: 604.888.1665 • Fax: 604.888.1502
Email: bestberries@driedigerfarms.com
Website: www.driedigerfarms.com

You can't beat the taste of BC's farm fresh berries! We offer mouth-watering strawberries, raspberries, blueberries, blackberries and red currants for sale from our family friendly farm. U-pick also available in clean, supervised fields. Bring your own pails or buy one from us. Fresh baked fruit pies, homemade fruit jams, syrups & local honey. We only carry BC grown vegetables and tree fruits when in season. Check out our daily specials and case lot sales.

Families welcome! Take the 232nd Street (north) exit to 72 Avenue, turn right then follow the signs to Driediger Farms. "Like" us on Facebook and view our website www.driedigerfarms.com for additional information. **Open: Jun-Aug, daily, 8am-6pm. Availability is weather dependent.**

57 Milner Valley Cheese Ltd.

Glenn and Marianne Smith and family
21479 Smith Crescent, Langley
Tel: 604.880.8184
Email: smith@milnervalleycheese.com
Website: www.milnervalleycheese.com

Welcome to our 5th-generation heritage family farm and goat dairy, nestled in the Milner Valley of Langley. During milking season, come and watch from our viewing windows as our herd of Saanens, Nubians, and Alpines come in for their evening milking. Their delicious milk is transferred to our cheese making room, where you can see the milk being transformed into a variety of goat cheeses, handmade right on the farm. We specialize in Milner Jack; a Colby style cheese, feta, and chevre. Sample our cheeses which are available at our onsite farm gate shop. During summer we offer our own goat milk gelato. We also carry goat milk soaps; lamb and other local artisanal products. **Open: Jan, Feb & Mar: Sat, 11am-5:30pm. April - Dec: Tues to Fri: 1pm-5:30pm; Sat, 11am-5:30pm.**

58 Cedar Rim Nursery Ltd.

The Bruce Family
7024 Glover Road, Langley
Tel: 604.888.4491
Fax: 604.532.1009
Email: sales@cedarrim.com
Website: www.cedarrim.com

Visit us for a one-stop garden shopping experience! Since it began as a small family business in 1978, Cedar Rim Nursery has grown to be the largest retail/wholesale nursery in BC. Still family owned and operated, Cedar Rim Nursery sits on a 45-acre site with an additional 100 growing acres in the Fraser Valley. When visiting, garden enthusiasts are greeted with thousands of trees, shrubs, perennials, grasses, annuals and tropical houseplants as well as a huge array of pots and products to grow their gardens. We are open rain or shine with over 125,000 sq. ft. of covered area and 10 acres of outdoor space to roam. Visit us at www.cedarrim.com or like us on Facebook to see recent news and specials. **Open: please call or visit our website for current hours of operation.**



Western Scale Co. Limited
1670 Kingsway Ave.,
Port Coquitlam, B.C.
CANADA V3C 3Y9

Tel: (604) 941-3474
Fax: (604) 941-4020
Email: sales@westernscale.ca
Web: www.westernscale.ca

59 Aldor Acres Family Farm

Albert, Dorothy, and Melissa Anderson
24990 – 84th Ave., Langley
Tel: 604.888.0788 • Fax: 604.882.0719
Email: aldoracres@telus.net
Website: www.aldoracresfamilyfarm.ca
Facebook: Aldor Acres Family Farm

The Anderson Family, now including granddaughter Melissa, invite you to visit their farm during the month of October for their annual Harvest festival with lots and lots of pumpkins, and much more to see. The Anderson's also open their farm each year for 4 days at Easter. Farm openings do not require a reservation for families, but reservations are necessary for school classes, church/youth groups, birthday parties, and company/family get-togethers. Reservations are taken at all times of the year. ALDOR ACRES FAMILY FARM also provide a hands-on farm animal display for your company or family event, and Senior's Bus Excursions are also welcomed at the farm by reservation and are becoming very popular. Ask us ... we can help ... whether it is on worm composting, spring baby animal classes, or other outdoor activities. We are known for our wonderful array of friendly farm animals, featuring goats, sheep, chickens, peafowl, big and small cattle, and more. In October, and just waiting in the field, are the many varieties, sizes and shapes of pumpkins to be crafted into that special "jack-o-lantern", pie, or soup. Our October produce tent, affectionately known as the "FARMACY", features many different vegetables such as broccoli, cauliflower, and corn, which can be picked while you wait. Specialty preserves, jams, jellies, our own farm-raised pork sausages, and eggs, are also available. Hay wagon rides complement all of the main farm activities. **Open: October 9am-5pm daily and Easter Fri-Mon 10am-4pm. Reservations required for groups only. Check our website and Facebook for other special events.**



60 U-Grow Organic Community Gardens

Stuart Bucholtz
8181 - 252 Street, Langley
Tel: 604.888.1236 • Fax: 604.888.1258
Website: ugrowgardens.org
Email: westcreekgorganics@yahoo.com



U-Grow Community Gardens invite beginner or experienced gardeners of any age to come grow an organic vegetable or flower garden in the fertile soil on our certified organic heritage farm. We have a beautiful, quiet location 5 minutes from Fort Langley with pure artesian well water, picnic areas, bathroom, garden tool storage and ample parking. Growing tips, organic fertilizer available as well as sources for organic seeds/transplants. Rent a ready-tilled garden the size of your choice from as little as \$100/year. Come to relax, have fun and grow! **Open: Year round, dawn to dusk. Please call ahead to arrange tour of the gardens.**

61 Croft Produce

Jennie and Keith Holkham
29750 Dewdney Trunk Road, Mission
Tel: 604.308.2065
Email: raven2@telus.net

We grow a wonderful selection of vegetables using natural farming; no pesticides, only non-GMO seeds. A sustainable farm grown with love for the environment so we all eat healthy. Red Russian garlic, runner beans, salad mix, tomatoes, herbs, peas, squash, potatoes, fresh flowers, and some bedding plants. As we grow, so will our produce selection. We are a new farm and we're looking forward to our farm opening late April/early May. Drop by and visit us; have a tea or cold drink on the house. I will also have a sample or two some days. **Open: Tue, Thurs, Fri 10am-6pm; Sat 10am-4pm or call ahead for a pick-up order and we'll have it ready for you.**

62 Bloomers

Barb Olson and Marilyn Jerczynski
12776 – 256th Street, Maple Ridge
Tel: 604.724.3286 or 604.788.2855
E-mail: mgjmarilyn@hotmail.com
Like us on Facebook.

Come and visit our country farm, market, and nursery. We have beautiful hanging baskets and plants. We can do made-to-order baskets and planters. Most vegetable plants and flowers started and grown on premises. We have u-pick vegetables and flowers. Come pick your own or enjoy what

Continued...

has already been picked. Coffee is always on. We are now carrying homemade fudge. In one of our barns we have interesting items for you to look at. Situated in Webster's Corners in rural Maple Ridge. There may be an animal or two around. Now accepting Credit Cards. **Open: May 1-Oct 3. Only on Friday 1pm-9pm, Saturday 10am-6pm. Closed Sundays. (Closed July 24&25.) On the days we are closed; we are open by appointment only.**

63 Murphy's Christmas Tree Farm

25377 - 124th Avenue, Maple Ridge
Tel: 604.287.0187 • Fax: 1.604.287.1045
Email: murphytreefarms@yahoo.com

Murphy's Christmas Trees & Fruit Orchard. Experience the u-cut Christmas tree tradition. We are only 45 minutes east of Vancouver; 25 minutes from Coquitlam. We have lots of varieties and sizes. Try our hot chocolate, coffee, and our traditional hot apple cider from our apple orchard. A great family tradition. **Open: Nov 28-Dec 20; 9am-6pm daily.**

64 Grow & Gather (Trice Farms Ltd)

Renata Triveri and Bill Hardy
24565 Dewdney Trunk Road, Maple Ridge
Tel: 604.466.3254
Email: growandgather@telus.net
Website: www.growandgather.com

Grow & Gather (formerly Trice Farms Pond & Garden) is a farmstead garden shop, tending a full complement of culinary, floral, landscape, and aquatic plants, plus an array of pond supplies. Shop for homegrown and locally sourced garden products, book the studio for small group events, or simply relax by the koi pond. In autumn, be sure to visit us on Saturdays from October 17 to November 14, when the Haney Farmers Market relocates to our greenhouses for a warmer, undercover market experience! **Open: daily (except Tuesdays) from 10am-6pm, and by appointment in Jan & Feb. Please phone ahead for holiday hours.**

65 Golden Ears Cheesecrafters Ltd.

Kerry, Lynn, Jenna, and Emma Davison
22270 - 128 Ave, Maple Ridge
Tel: 604.467.0004
Email: goldenearscheese@gmail.com
Website: www.cheesecrafters.ca
Facebook: [goldenearscheesecrafters](https://www.facebook.com/goldenearscheesecrafters)

Discover this charming 'local food' lover's destination where exquisite Artisan

Continued...

cheeses are made on site with the farm fresh Jersey milk. Enjoy a home cooked Bistro lunch or weekend breakfast, made in the open kitchen, browse among the many local artisan food products, kitchenware & gifts or simply relax with gelato & coffee on the covered patio. Reserve a spot for our weekly High Teas or Chef Demo Dinner Classes listed on the website. Private event bookings are available as well. See cheesecrafters.ca. **Open: 7 days a week 10am-6pm. (for Stat holiday hours, please check website or call us @604-467-0004).**

66 Hopcott Premium Meats

The Hopcott Family
18385 Old Dewdney Trunk Road, Pitt Meadows

Tel: 604.465.7799

Email: info@hopcottmeats.ca

Website: www.hopcottmeats.ca

Like us on Facebook and follow us on Twitter and Instagram

The Hopcott Family invites you to visit our 3rd generation family farm. Our specialty is beef raised the traditional way with no added hormones or antibiotics. We dry-age our AAA beef, a minimum of 28 days, custom cut, and sell direct to the public from our on-farm meat shop. We offer many house-made deli items from our smoke house including sandwich meats, sausages, pepperoni, jerky, bacon, and more. Many of our deli items are gluten and nitrate-free. We also carry chicken, pork, produce and other local items. We grow our own corn, cranberries, strawberries, raspberries, blackberries, tayberries and sell them in season. We pride ourselves on excellent customer service and a knowledgeable and welcoming staff. We look forward to serving you soon! Know your farmer. Know your food. **Open year-round. See our website for weekly specials and hours of operation.**

67 Meadows Maze

The Hopcott Family
13672 Reichenbach Road, Pitt Meadows

Tel: 604.460.0603 • Fax: 604.465.5275

Email: info@meadowsmaze.com

Website: www.meadowsmaze.com

Challenge your navigational skills as you wind your way through this year's exciting new maze design. A great day for the entire family featuring a Petting Zoo, Bee Observatory, Hay Wagon Ride, Train Rides, Meadows Mountain 40ft. tube slide, Corn Cannons, Harvest Time Education Centre, Pig Races and more. Visit our concession featuring Hopcott beef burgers and hot

Continued...

dogs from our specialty meat shop across the street. Rent a private "Cornference" room for your special event. Tour groups, schools, companies, and parties are welcome. Follow us on Facebook and Twitter for special deals. **Open: mid-August to mid-October. Check the website for times and special events.**

68 Painted River Farm

Wes and Donna Gilmore
218 Barnston Island, Surrey

Tel: 604.581.2665

Email: info@paintedriverfarm.ca

Website: www.paintedriverfarm.ca



Welcome to Painted River Farm located on picturesque Barnston Island in the Fraser River, just 25 minutes from downtown Vancouver. We are a second generation family-owned and operated beef and Boer goat producer. We are proud to be SPCA and VBP "Canada Beef on farm food safety program" certified through the Canadian Cattlemen's Association. We raise all our animals from birth; from pasture to the plate, we do not feed lot our animals; they roam and graze on the 130 acres here on Barnston Island. Our beef is naturally raised with no antibiotics or hormones and we do not use any chemical fertilizers or pesticides on our land. We sell our beef by the ½ or ¼ sides and by the 60 or 30lb freezer packs – for a complete list of the freezer packs please see our website at www.paintedriverfarm.ca. Our Boer Goats are sold complete by the lb cut, wrapped or whole. All of our meat products are CFIA inspected at a local provincial/federal plant. Please call for pricing and availability. Pre-orders are strongly recommended. Gift certificates are now available for that easy gift giving idea. **Please call before coming.**

69 Art's Nursery Garden & Home

Art and Rebecca Vanderzalm

8940 - 192nd Street, Surrey

Tel: 604.882.1201 • Fax: 604.882.5969

Email: info@artsnursery.com

Website: www.artsnursery.com

Art's Nursery is one of Greater Vancouver's largest retail and wholesale Garden Centers and Nurseries. Run by Art and his daughter Rebecca, along with over 20 professional staff, the nursery provides great customer service from plant selection, delivery, design and more! Come see our 10 acres of nursery stock while shopping in a golf cart and discover why we are 'The Place for Plants'. Remember to browse our Home décor area. Check out great statuary, tools, along with other unique gifts and garden items. Check us out at www.artsnursery.com. **Open: daily, year round, except December 25 to mid-January. Check website for hours and specials.**

70 Port Kells Nurseries

Rene and Joanne Duineveld

18730 - 88th Avenue, Surrey

Tel: 604.882.1344 • Fax: 604.882.1323

Email: portkells@shaw.ca

Website: www.portkellsnurseries.com

Our family-owned and operated nursery is easily the largest bedding plant and hanging basket supplier in the Valley. We have 40,000 square feet of greenhouses, 4,000 square feet of gift shop, and 32 bulk bins. We offer: a very large bulk material selection, turf, 32 acres of trees and shrubs, water plants and fountains, a wood workshop, tool and trailer rentals. We sell and rent hay for special events. We also have two petting zoos, pumpkin patch, children's play areas, disposal bins. We welcome school and group tours. We sell fresh eggs, gift cards, and giftware. We have a haunted house and hay maze in October. We fill our hanging baskets/planters and grow them until you are ready (over 10,000 per year). We have up to 69 staff members and seven delivery trucks to help you for your life and garden pleasure. We accept visa/MasterCard/debit/cash. **Open: every day; Oct-Dec 9am-5pm; closed Jan; Feb-Mar 9am-5pm; April 9am-6pm, May-Jun Sat-Wed 9am-6pm and Thurs-Fri 9am-8pm; Jul-Sept 9am-6pm.**

71 Rondriso Farms

Ron and Pam Tamis

8390 - 172nd Street, Surrey

Tel: 604.574.5585 • Fax: 604.574.3308

Email: rondriso@shaw.ca

Website: www.rondriso.com



Only 5 minutes from Highway #1, 176th St. exit, Rondriso Farms features our own SPCA certified naturally raised beef, hay, pumpkin patch, sweet corn and homegrown produce stand that we call our "General Store". Our own daily picked sweet corn is a huge hit! We guarantee only the freshest, safest produce possible which includes new potatoes, zucchini, squash, carrots, beets, pickling cucumbers, broccoli, cabbage, cauliflower, parsnips, onions, and more. Come taste the superb farm fresh quality that our rich black peat soil provides! We also feature other SPCA certified and local meat products in our store to add to your one stop farm fresh dinner menu! When visiting the store ask us about our weekly seasonal Produce Box! Our Pumpkin Patch will have some new features on top of our existing daily hay rides, barn tour, educational tours, BBQ area, and some of the biggest homegrown pumpkins around. We have smaller ones too! **Store open: Sat, throughout the winter; fresh produce Jun-Oct 31. Check out our website for summer and wintertime hours. Pumpkin patch open: Mon-Fri, 3pm-6pm; Sat, Sun, Holidays, 10am-6pm.**

72 Two EE's Farm Market

Ann Jansen

16411 Fraser Highway, Surrey

Tel: 604.572.1813

Email: twoeesfarm@shaw.ca

Website: <http://twoeesfarm.foodpages.ca>



Our store is a popular destination for fresh fruits and vegetables in Surrey. We carry a large variety of organic and non-organic produce at great prices: a great variety of vegetables, herbs, and seasonal Asian greens. Produce marked "grown without sprays" is grown on location, behind the store. Most produce marked "certified organic" is grown by our farm on 88th Ave., Two EE's Organic Produce. All produce from this location is certified organic and is also distributed by other organic wholesalers. In addition to fruits and vegetables, we also carry bread, plants/flowers, Dutch and European groceries, honey, eggs, dairy products and more. Our company has been family owned and operated for 55 years. To learn more about the history of Two Farm and Two EE's Organic Produce, please go to www.wegrownorganic.ca. **Open: year round, hours vary by season. Closed Sundays and Holidays.**

73 Honeybee Centre

7480 - 176 Street, Surrey

Tel: 604.575.2337

Email: info@honeybeecentre.com

Website: www.honeybeecentre.com

Honeybee Centre is a local honeybee farm on the corner of Fraser Highway and 176th Street in Surrey. Our honey store and bistro are open every day to the public. Sample dozens of unique varieties of local and exotic honey, try some bee pollen, royal jelly or propolis, or browse our selection of handmade beeswax candles and bee related gifts. After you've fully explored our store, relax in our beautiful new café, Fry's Corner Beestro, and enjoy honey inspired coffee, tea and desserts or any of our fresh salads, Paninis and hot soups. Want to learn from an expert? Join in on one of our drop-in presentations at 12:00 and 2:00 on weekends and holidays for \$5/person. **Open: Every day, Mon-Fri, 9am-6pm; Sat, Sun & Stat Holidays, 10am-6pm.**

74 Surrey Farms

5180 - 152nd Street, Surrey

Tel: 604.574.1390 • Fax: 604.574.1558

Email: mandyrai1959@gmail.com

Website: www.surreyfarms.ca

Come and enjoy the farm-fresh taste at Surrey Farms. We stand by the freshness of our hand-picked berries. We pick strawberries, raspberries, blueberries

Continued...

and blackberries daily to provide the real taste of the farm. For those adventurers, our fields are open for U-pick throughout the season. We grow only the best varieties of vegetables and provide your family with all their canning needs. Okanagan fruits are shipped fresh off of the trees, bringing the Okanagan to you. Surrey Farms also is proud in bringing the farm fresh taste to your dinner table.

Open: Daily, May-October, 9am-6pm.

75 M & M Pacific Coast Farms

4962 - 152nd Street, Surrey

Tel: 604.574.5739 • Fax 604.575.2584

Email: paulgill567@gmail.com

Family owned and operated since 1979. Our blueberries are picked fresh daily, cleaned, packed, and ready to eat. Both retail and wholesale sales. We also have a wonderful assortment of jams, jellies, honey, syrup, and many other products.

Open: July 1-Sept 5; 10am-6pm.

76 Cloverdale Country Farms

5888 - 168th Street, Surrey

Tel: 604.575.7818

Website: www.cloverdalecountryfarms.com

Cloverdale Country Farms is family owned and operated with over 40 years of farming experience. Our market showcases quality locally grown fresh fruits and vegetables in season. We grow carrots, squash, cabbage, sweet corn, onions, parsnips, potatoes and pumpkins. You can count on our country market for fresh strawberries, raspberries and blueberries as well as all of the Okanagan fruit you need. Come visit our new Garden Spaces. We have an excellent selection of annuals, perennials and garden décor that will inspire garden enthusiasts. We have a complete line of organic herbs and vegetables plants to grow your own veggies. Come visit our friendly and knowledgeable staff. Our selection of grocery products is diverse and a lot of the grocery selection will not be found in your local chain stores. Come sit with us and have a cup of coffee or a sub sandwich or Panini built to your liking cappuccino from our Bistro area. For a treat, choose from twenty different flavours of ice cream or have a bowl of ice cream with fresh fruit. Saturdays and Sundays we provide fun for children in our free Bouncy Castle. Located at the corner of #10 Highway and 168th Street; easy to find and lots of free parking. **Open: All year, April 1-Oct 31, 8am-8pm; Nov 1-Mar 31, 8am-7pm.**

77 Mary's Garden

Mike and Ken Nootebos

15649 - 40th Ave, Surrey

Tel: 604.576.9297 • Fax: 604.576.9278

Email: marysgarden@live.ca

Website: www.marysgarden.ca

With over 40 years in business, Mary's Garden has proven to be the best place around to get the freshest, "daily-picked" fruit and vegetables. No U-pick. We provide safer and fresher homegrown produce than the big stores. With over 30 vegetables and herbs grown on the premises, and the best quality fruit offered from the Okanagan, Mary's Garden will satisfy even the fussiest buyer. Try our famous carrots and corn known to be sweet as candy. We also have cut flowers and an assortment of jams, syrups, and honeys made right here in BC. We also carry free-range eggs, fresh dairy products from Island Farms Dairy, and fresh, locally baked "preservative free" bread and pastas. For the urban gourmet try our locally made marinades and salad dressings. Remember the bulk specials in the fall to last you the whole winter. Located a few blocks off 152nd Street on 40th Avenue, Mary's Garden is minutes from White Rock and Cloverdale, and right on the border of the Morgan Creek Golf Course. Find us on Facebook for current produce. **Open: early May-Nov 30, Mon-Sat and holidays (except Thanksgiving Mon), 9:30am-6pm. Closed Sundays.**

78 Zaklan Heritage Farm

Doug Zaklan and Gemma McNeill

13278-84th Ave, Surrey

Tel: 604.782.0586

Email: gemma@zaklanheritagefarm.com

Website: www.zaklanheritagefarm.com

Started in the 1920's, this is one of the last remaining farms in Central Surrey. We are a couple of young farmers growing food and creating community in the suburbs. Our farm is an easy escape from the hustle and bustle of the city without having to travel more than 30 minutes from Vancouver. All of our 40 different types of vegetables are grown using sustainable, ecological practices without the use of harmful chemicals or fertilizers. Visit our pasture raised flock of laying hens and enjoy fresh eggs straight from the farm. We hold a Saturday market each week of the season featuring the freshest and best produce from our fields. Bring a picnic and stay for a visit with our friendly llama Reverend. **Open: Saturdays June-October 10am-2pm.**

79 Urban Digs Farm

Julia Smith & Ludo Ferrari
4992 Byrne Road, Burnaby
Tel: 778.379.5262
E-mail: farmers@urbandigsfarm.com
Website: www.urbandigsfarm.com

At Urban Digs we are farmers first, and it takes one to know one. We supply families and chefs with trustworthy pastured meat, eggs and produce grown at our farm and by other farmers we know. We help people know their food so they can make informed choices that reflect their values. **Open: May-Dec, see website for days and hours of operation.**

80 Earthwise Farm and Garden

6400 3rd Ave, Tsawwassen
Tel: 604.946.9828
E-mail: info@earthwisesociety.bc.ca
Website: www.earthwisesociety.bc.ca



We are a demonstration garden and farm store. On Saturdays we also have a farmers market. The Earthwise Farm and Garden is a three-acre ecological demonstration garden and organic teaching farm, located at Southlands, just down the road from Boundary Bay Regional Park in Tsawwassen. Visitors can bring a picnic lunch, explore the gardens and shop for pesticide-free perennials to establish their own bee friendly landscapes and pollinator gardens. **Demonstration garden: open daily during daylight hours.** The volunteer-run Farm Store helps support Earthwise Society's educational and community programs through the sale of certified organic produce fresh from our farm. **Farm Store open Wednesdays from 2-6 pm and Saturdays 10am-2pm.** In addition to the Farm Store, Earthwise farm hosts a multiple vendor organic Farmer's Market. **Farmers market open every Saturday May 2-Oct 31, 10am-2pm.**

Saturdays 9am-1pm | May 2nd - October 10th
Mission Library Parking Lot | 33247 2nd Avenue
www.missioncityfarmersmarket.com

81 Westham Island Herb Farm

Sharon Ellis
4690 Kirkland Road, Delta
Tel: 604.312.1023 • Fax: 604.946.2299
Email: farmer@westhamislandherb.ca
Website: www.westhamislandherbfarm.ca

We are more than just an herb farm.... Westham Island Herb Farm offers you an array of veggies, fruits and flowers. We have been proudly farming on Westham Island since 1916. We invite you to come out and take a walk through our fields and see how your food is grown and harvested. Our season begins in May with seedlings for your garden, strawberries in June and the pumpkin patch in October but that is not all that is happening... from the end of May to the end of October our shelves are bursting with our organic veggies. We also have a General Store stocked with jellies made from the best fruit, local honeys and homemade soap. Our farm is located west of Ladner, just minutes before the Reifel Bird Sanctuary. To learn more about our farm, crop availability and our CSA program 'Harvest in Box' visit our website: www.westhamislandherbfarm.ca. **Open: May 2nd to October 31st daily, 9am-5pm.**

82 Emma Lea Farms Ltd.

Kevin and Joanne Husband & Family
2727 Westham Island Road, Delta
Customer Stand Tel: 604.946.8216
Website: www.emmaleafarms.com
Facebook: www.facebook.com/emmaleafarms

Come to beautiful Westham Island for a great family experience. While picking your own strawberries, raspberries, blueberries, blackberries or tayberries, be sure to take a moment and enjoy the fresh air and fantastic countryside view. We offer U-pick and fresh picked berries, our own jam, honey, pickled beans, pickled beets and various vegetables. "Emma's Ice Cream" has delicious sundaes, milkshakes, cones, smoothies, and daily baked goods to

enjoy in our picnic area. Our family has been in the berry business for over 30 years and is proud to have successfully completed our Environmental Farm Plan and the Canadian Horticultural Council Food Safety Audit. Stop by in the fall for our selection of fall veggies and U-Pick or picked pumpkins and gourds. Lots of fun for the family, then something to warm you up from our Ice Cream Stand. Call for up-to-date information or to place an order for pick-up. Thank you for buying local! **Open: Daily mid-June to mid-August 8am-7pm. Sept 1-Oct 31, Thurs-Sun 10am-6pm.**

83 Crophorne Farm

The Ryall Family
4362 Tamboline Road, Delta
Tel: 604.910.5803
Email: info@crophornefarm.com
Website: www.crophornefarm.com



REAL.GOOD.HONEST.FOOD. Winner of the 2014 BC Outstanding Young Farmer Award, sisters Rachel and Lydia along with their family, grow a wide variety of Certified Organic crops on beautiful Westham Island. We focus on unique specialty vegetables, such as coloured carrots and heirloom tomatoes, while also growing the staples, such as potatoes, cabbages and beets, which your family already loves. Everything we sell is grown on our farm so you can be sure that it is freshly picked and at its peak. Our happy pastured hens supply us with delicious Certified Organic eggs. Stop in for a visit on your way out to the Reifel Bird Sanctuary for some of our fresh Certified Organic seasonal produce and take a moment to enjoy our beautiful family farm. Visit our website to learn more about our farm and for information on our Community Supported Agriculture (CSA) Program and Farmer's Market schedule.

Open: 10am-5pm, Tues-Sun, approx. mid-June to end of October. Please check website or call ahead for actual dates. Cash only.

84 Bissett Farms Ltd and Westham Island Estate Winery

Lorraine Bissett and Family
2170 Westham Island Rd, Delta
Tel: 604.946.7471
Email: bissettl@telus.net
Website for Winery:
www.westhamislandwinery.com

U-Pick and ready picked berries in season at Bissett Farms where our customers enjoy great service and the best tasting berries grown on Westham Island. U-pick and ready picked strawberries, raspberries, loganberries, tayberries, blackberries, red/white & black currants, gooseberries. All berries grown using integrated pest management program. Visit Delta's first winery now in its 12th year of operation after picking or purchasing your berries for a taste of the berries in a glass. The Winery also has a great selection of giftware and made in BC food products available including gluten free. Great gift ideas and great prices. Picnic area open during the summer to enjoy your own packed picnic along with a bottle of our Westham Islands award winning wines. We are the last berry farm located at the end of Westham Island Rd. **Open: Farm, Jun-Aug 8am-6pm. Winery, year round, 11am-5pm.**

Fresh Local Strawberries

Fresh, Ripe, & Juicy

BC's Fresh Strawberries are available for a short time only. There is really nothing else like them!

Visit a farm near you today and savour the sweet taste of summer!



Barbara Ellis



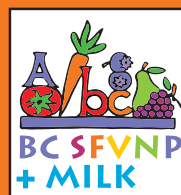
For information on our industry and farms, season updates and great recipes visit:

www.bcstrawberries.com



BC Agriculture in the Classroom

Through our programs and resources, students can learn about their food, their environment, and their future.



For more programs and teacher resources visit: aitc.ca/bc



BCAITC, Abbotsford Agriculture Centre
1767 Angus Campbell Road,
Abbotsford, BC V3G 2M3

phone: 604 556 3088 fax: 604 556 3030